

# Canon SERVICE INFORMATION

Issued by Office Imaging Products Device Quality Assurance Center, Canon Inc.

MODEL:

# DADF-B1/K1

No. : F-04-J02-009

DATE : OCT.,2002

*J. Sakai*

## LOCATION

## SUBJECT : Revised Parts Catalog

We are issuing revised Parts Catalog. Please go over the descriptions that follow for the catalog.

The catalog has been revised to accommodate the addition of new models DADF-K1.

Particulars

Name of Parts Catalog: DADF-B1/K1

Type of Revision : Full revision

Kindly replace the previous with the one being issued.

# FY8-31E5-01Y

# REVISION PAGE LIST

R : Replacement,  
 S : Supplement,  
 D : Destroyed,

Model : DADF-B1/K1

---



---

FIG- URE	PAGE	REVISION								FIG- URE	PAGE	REVISION							
		Mar. 1999	Oct. 2002									Mar. 1999	Oct. 2002						
I	1	0	1R							P01B	1		0S						
	2	0	1R								2		0S						
	3	0	1R																
										P10	1	0	1R						
II	1	0	→								2	0	1R						
	2	0	→								3	0	1R						
	3	0	→																
	4	0	→							P11	1	0	1R						
	5	0	→								2	0	1R						
	6	0	→								3	0	1R						
	7	0	→																
	8	0	→							P20	1	0	1R						
	9	0	→																
	10	0	→							P21	1	0	1R						
	11	0	→								2	0	1R						
	12	0	→																
	13	0	→							P30	1	0	1R						
	14	0	→								2	0	1R						
	15	0	→								3	0	1R						
	16	0	→								4	0	1R						
	17	0	→								5		0S						
	18	0	→																
										P31	1	0	1R						
PA	1	0	1R																
										P32	1	0	1R						
P01	1	0	D								2	0	1R						
	2	0	D																
										P33	1	0	1R						
P01A	1		0S								2	0	1R						
	2		0S																



# DADF-B1/K1

## PARTS CATALOG

REVISION 1

### DADF-B1

AB SIZE	F25 - 1601	ZSB00001 -
A/INCH SIZE	F25 - 1611	ZSC00001 -
A SIZE	F25 - 1621	ZSD00001 -
AB/INCH SIZE	F25 - 1631	ZSE00001 -

### DADF-K1

AB SIZE	F25 - 1602	XKW00001 -
A/INCH SIZE	F25 - 1612	XKX00001 -
A SIZE	F25 - 1622	XKY00001 -
AB/INCH SIZE	F25 - 1632	XKZ00001 -

**Canon**

OCT. 2002

**FY8-31E5-010**

## PREFACE

This Parts Catalog contains listings of parts used in the Canon DADF-B1/K1. Diagrams are provided with the listings to aid the service technician in identifying clearly, the item to be ordered.

Whenever ordering parts, consult this Parts Catalog for all of the information pertaining to each item. Be sure to include, in the Parts Request, the full item description, the item part number, and the quantity.

Canon Inc.

Office Imaging Products Device Quality Assurance Center  
5-1, Hakusan 7-chome,  
Toride-city, Ibaraki 302-8501, Japan

*COPYRIGHT © 2002 CANON INC.*

*Printed in Japan*

*Imprimé au Japon*

Use of this manual should be strictly supervised to avoid disclosure of confidential information.

# CONTENTS

– DADF-B1/K1 –

- PA. ASSEMBLY LOCATION DIAGRAM
  
- P01A. MOUNTING HARDWARE (DADF-B1)
- P01B. MOUNTING HARDWARE (DADF-K1)
  
- P10. MAIN COVER ASSEMBLY
- P11. DOCUMENT TRAY ASSEMBLY
  
- P20. FEEDER DRIVE ASSEMBLY
- P21. SEPARATION DRIVE ASSEMBLY
  
- P30. DOCUMENT PICK-UP ASSEMBLY
- P31. DOCUMENT PICK-UP COVER ASSEMBLY
- P32. SEPARATION LOWER GUIDE ASSEMBLY
- P33. SEPARATION UPPER GUIDE ASSEMBLY
- P35. FEEDER ASSEMBLY
  
- P40. REVERSE DELIVERY ASSEMBLY
- P41. REVERSE COVER ASSEMBLY
- P42. DOCUMENT DELIVERY ASSEMBLY
  
- P90. ADF CONTROLLER PCB ASSEMBLY
  
- PB. LIST OF CONNECTORS
  
- C. LIST OF STANDARD FASTENERS
  
- PD. NUMERICAL INDEX



# FIGURE PA ASSEMBLY LOCATION DIAGRAM

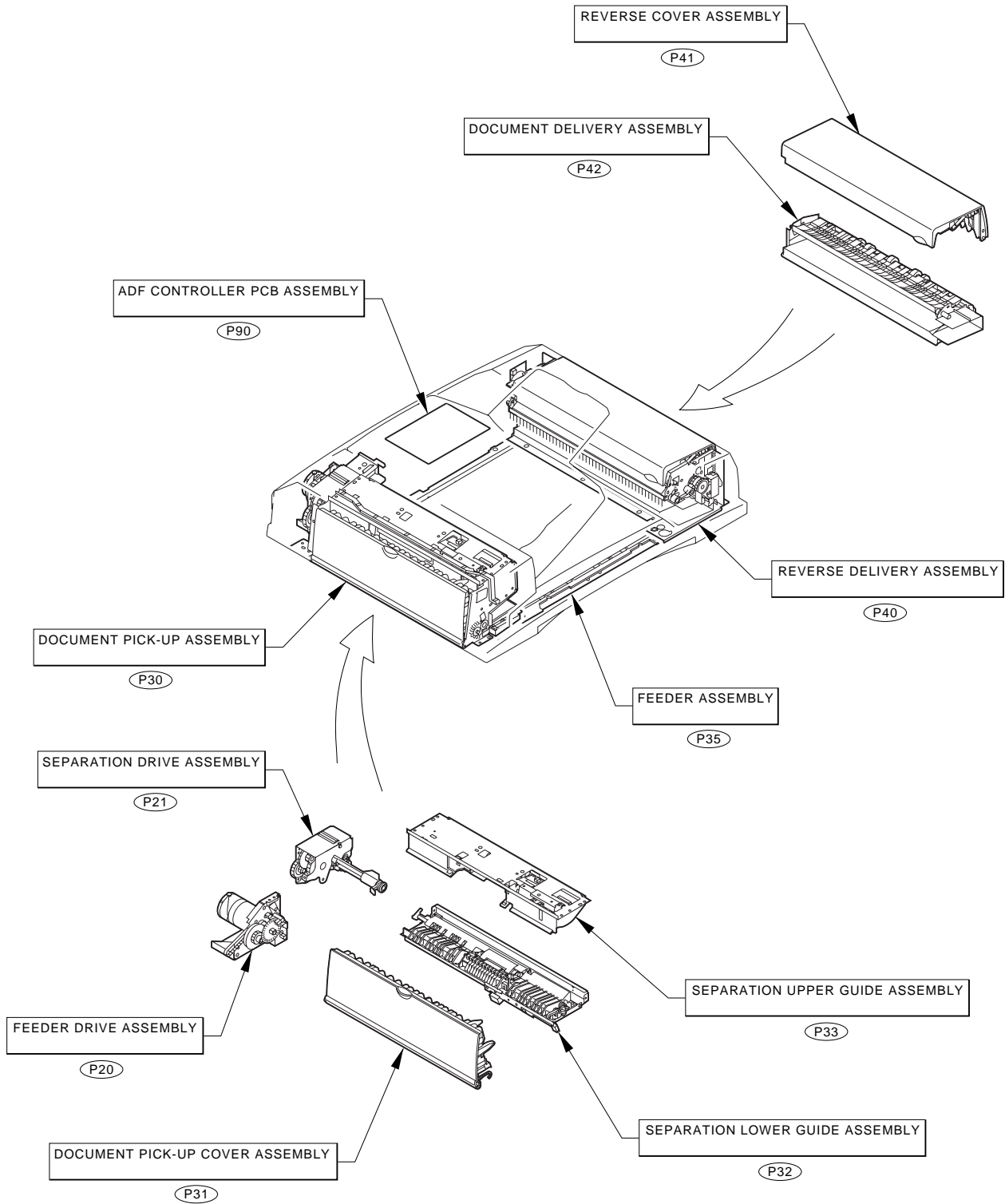




FIGURE P01A MOUNTING HARDWARE (DADF-B1)

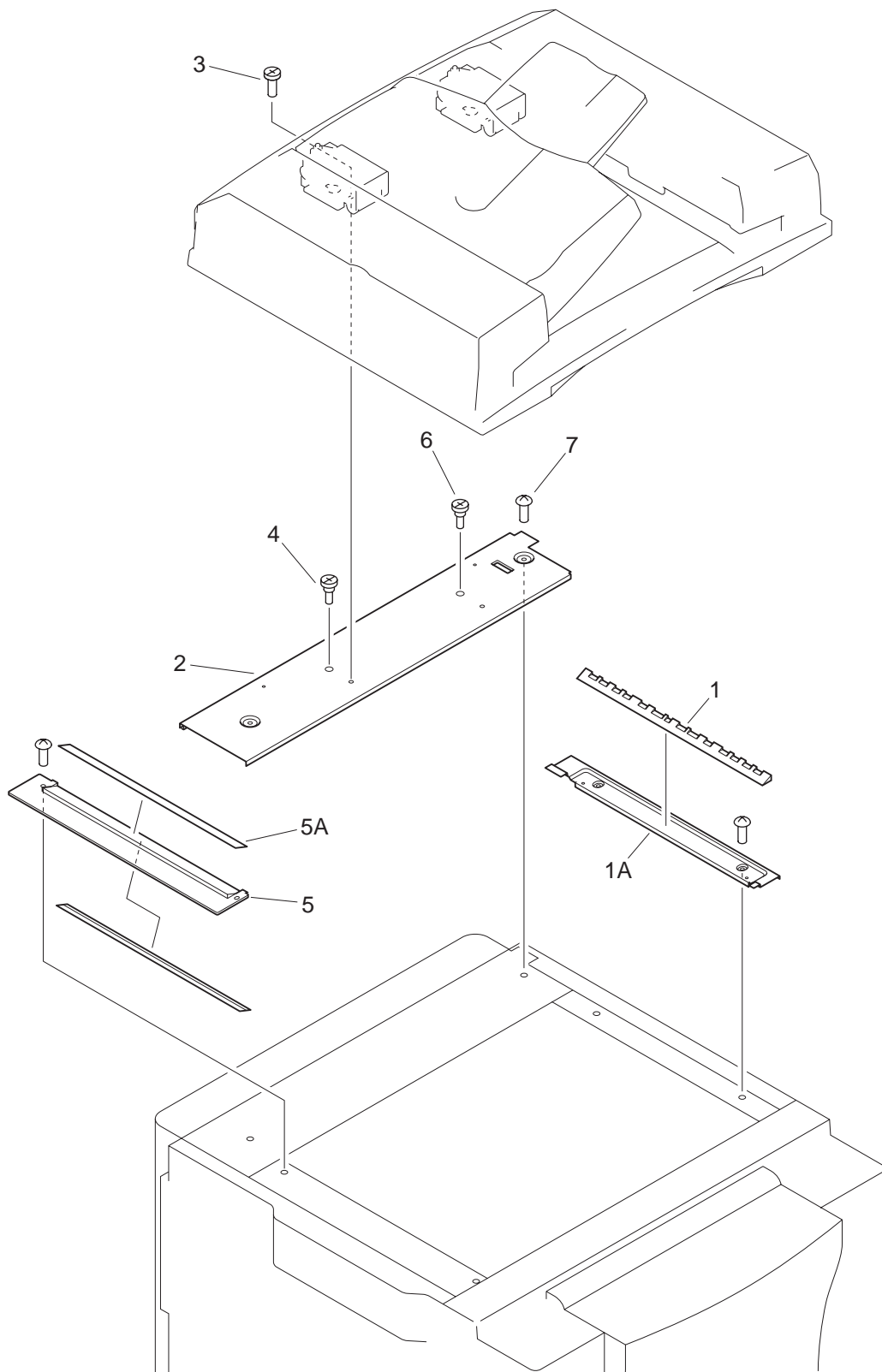


FIGURE & KEY NO.	PART NUMBER	RANK	QTY	DESCRIPTION	SERIAL NUMBER / REMARKS
P01A -	NPN		RF	MOUNTING HARDWARE	DADF-B1
1	FF5-9144-000		1	PLATE, JUMP, RIGHT	
1A	FB5-0423-000		1	RETAINER, GLASS, RIGHT	
2	FF5-9171-000		1	PANEL, UPPER, REAR	
3	FS5-9589-000		2	SCREW,M4	
4	FS5-9590-000		1	SCREW,STEPPED,M4	
5	FF5-9152-000		1	PLATE, JUMP, LEFT	AB SIZE
	FF5-9486-000		1	PLATE, JUMP, LEFT	A/INCH SIZE
	FF5-9487-000		1	PLATE, JUMP, LEFT	A SIZE
	FF5-9488-000		1	PLATE, JUMP, LEFT	AB/INCH SIZE
5A	FB5-0381-000		1	PLATE, INDEX, LEFT	AB SIZE
	FB5-2204-000		1	PLATE, INDEX, LEFT	A/INCH SIZE
	FB5-2205-000		1	PLATE, INDEX, LEFT	A SIZE
	FB5-2206-000		1	PLATE, INDEX, LEFT	AB/INCH SIZE
6	FS5-9591-000		1	SCREW,STEPPED,M4	
7	XA9-0633-000		2	SCREW,RS W/WASHER,M4X8	

FIGURE P01B MOUNTING HARDWARE (DADF-K1)

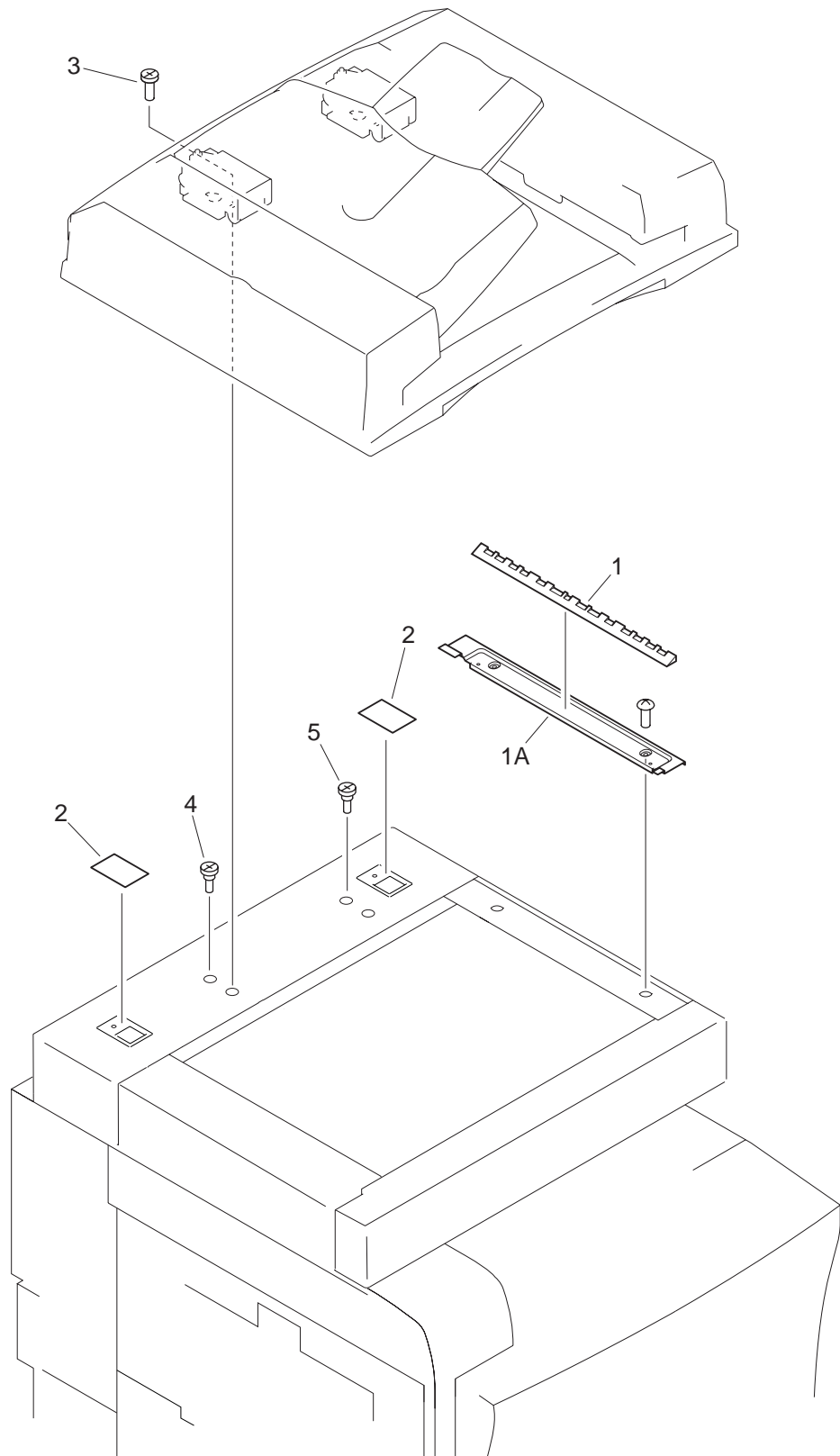


FIGURE & KEY NO.	PART NUMBER	R A N K	Q' T Y	DESCRIPTION	SERIAL NUMBER / REMARKS
P01B -	NPN		RF	MOUNTING HARDWARE	DADF-K1
1	FF6-2457-000		1	PLATE, PAPER JUMP, RIGHT	
1A	FB6-4993-000		1	PLATE, GLASS RETAINER, RIGHT	
2	FB6-4994-000		2	SHEET, READER HOLE BLANKING	
3	FS5-9546-000		2	SCREW, M4X12	
4	FS5-9774-000		1	SCREW, STEPPED, M4	
5	FS5-9775-000		1	SCREW, STEPPED, M4	

# FIGURE P10

## MAIN COVER ASSEMBLY

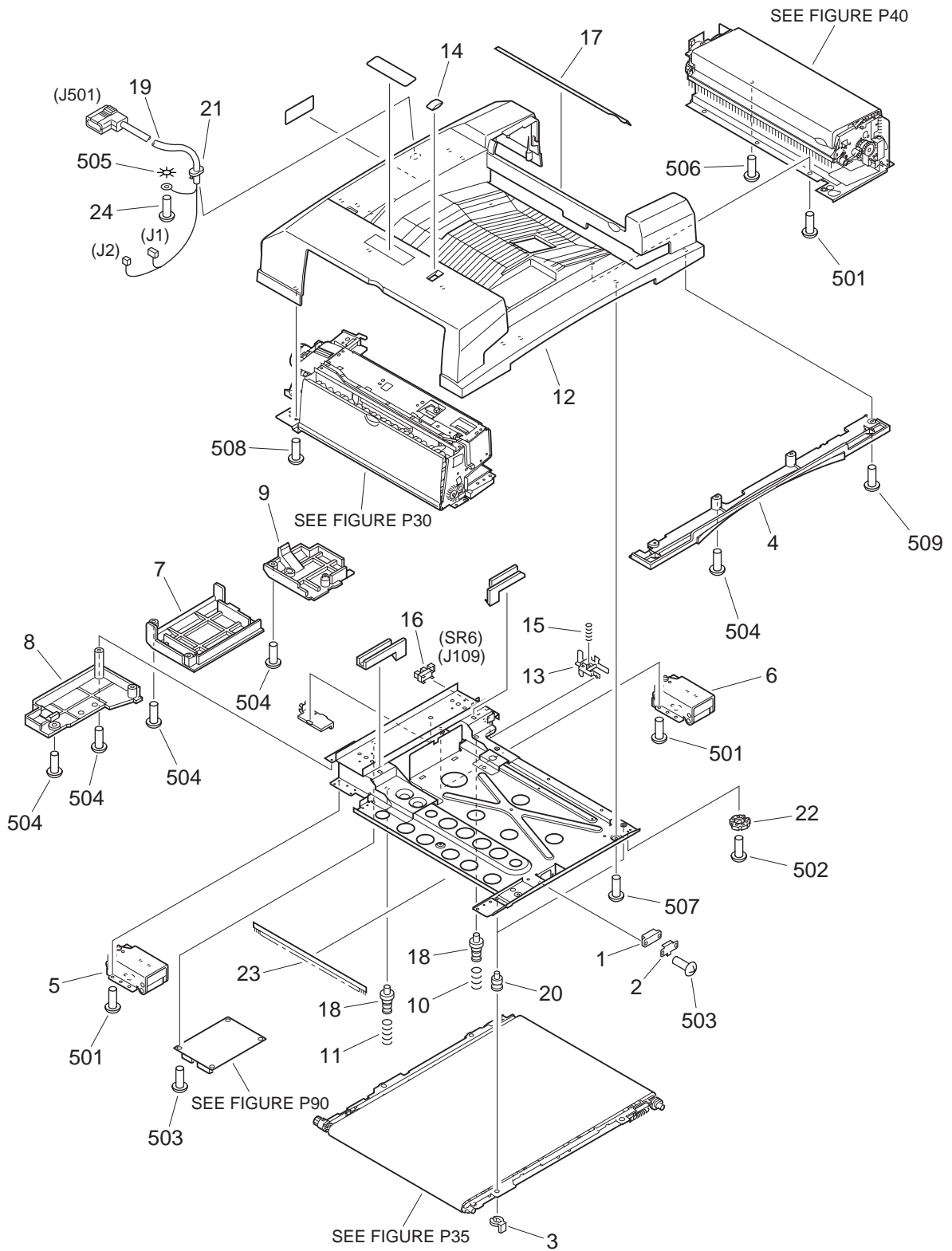


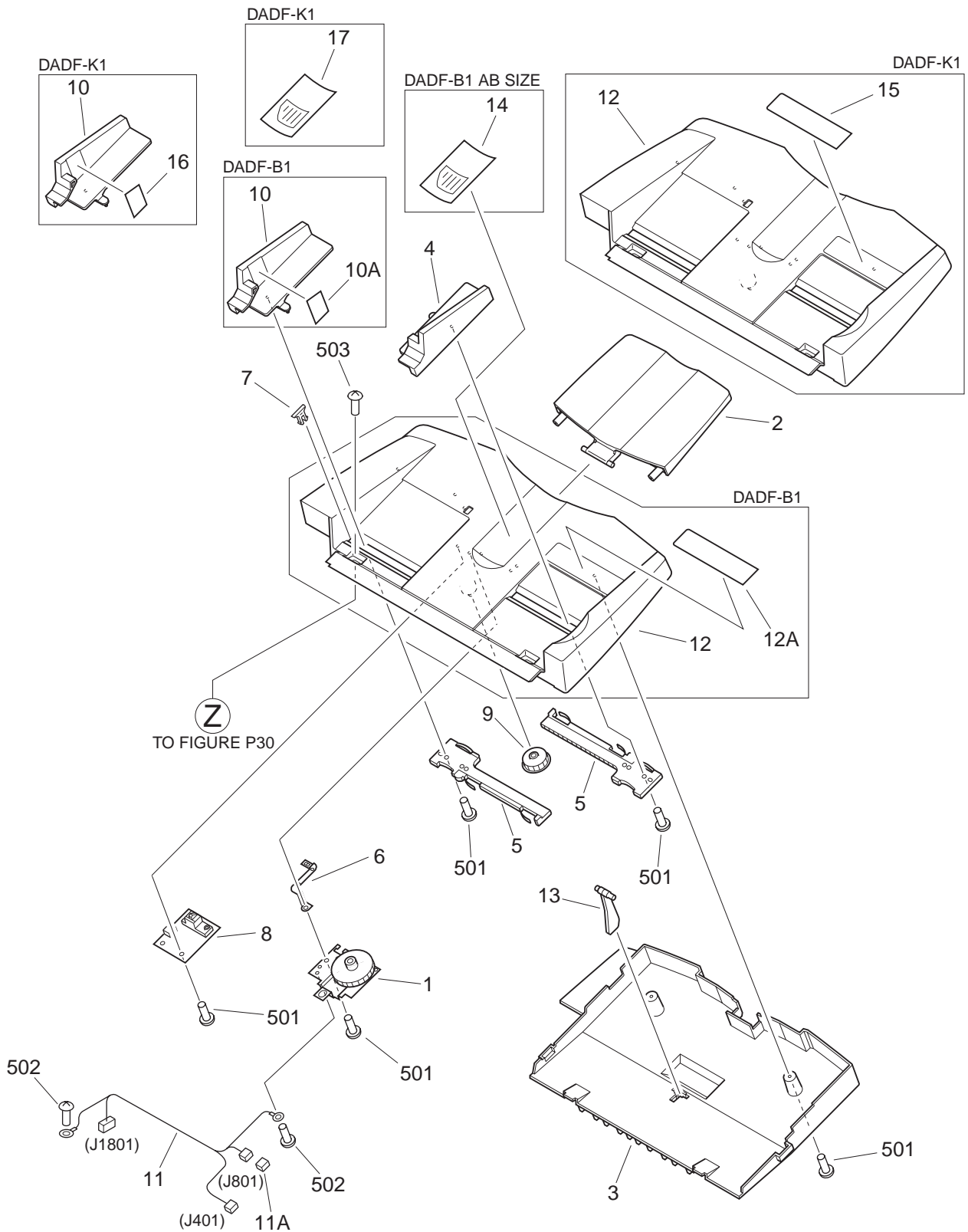
FIGURE & KEY NO.	PART NUMBER	RANK	QTY	DESCRIPTION	SERIAL NUMBER / REMARKS
P10 -	NPN			MAIN COVER ASSEMBLY	
1	FA3-4725-000		1	CATCH, MAGNET	
2	FB3-5699-000		1	PLATE, GROUNDING	
3	FB4-6890-000		4	CLIP	
4	FB5-0420-000		1	COVER, FRONT	DADF-B1
-----					
	FB6-4946-000		1	COVER, FRONT	DADF-K1
5	FB5-0426-030		1	HINGE, LEFT	DADF-B1
	FB6-5001-000		1	HINGE, LEFT	DADF-K1
6	FB5-0427-000		1	HINGE, RIGHT	DADF-B1
	FB6-5002-000		1	HINGE, RIGHT	DADF-K1
-----					
7	FB5-0524-000		1	COVER, PCB	DADF-B1
	FB6-4949-000		1	COVER, PCB	DADF-K1
8	FB5-0525-020		1	COVER, LOWER, LEFT	DADF-B1
	FB6-4947-000		1	COVER, LOWER, LEFT	DADF-K1
9	FB5-0526-000		1	COVER, LOWER, RIGHT	DADF-B1
-----					
	FB6-4948-000		1	COVER, LOWER, RIGHT	DADF-K1
10	FS7-2012-000		1	SPRING, COMPRESSION	
11	FS7-2237-000		1	SPRING, COMPRESSION	
12	FF5-9143-000	N	1	COVER, MAIN	DADF-B1 AB SIZE
	FF5-9503-000	N	1	COVER,MAIN	DADF-B1 A/INCH,AB/INCH SIZE
-----					
	FF5-9504-000	N	1	COVER,MAIN	DADF-B1 A SIZE
	FF6-2446-000		1	PANEL, MAIN	DADF-K1
13	FB5-0512-000		1	ARM, SENSOR, OPEN/CLOSE	
14	FB4-6952-000		1	COVER, LED	
15	FS7-2236-000		1	SPRING, COMPRESSION	
-----					
16	WG8-5362-000		1	IC, TLP1241, PHOTO-INTERRUPTER	SR6 J109
17	FB5-2207-000		1	SHEET	
18	FS5-9587-000		2	SHAFT, BELT MOUNT, 2	
19	FG3-0487-000		1	INTERFACE CABLE	J1,2,501
20	FS5-9588-000		2	SHAFT, BELT MOUNT, 1	

FIGURE & KEY NO.	PART NUMBER	RANK	QTY	DESCRIPTION	SERIAL NUMBER / REMARKS
P10 - 21	FB5-0461-000		1	GROMMET	
22	FB5-2203-000		1	PLATE, ADJUST	
23	FB5-2223-000		1	STATIC CHARGE ELIMINATOR	
24	XA9-0500-000		1	SCREW, W/WASHER, M3X6	
501	XB1-2400-609		AR	SCREW, MACH., TRUSS HEAD, M4X6	
502	XB1-2300-609		1	SCREW, MACH., TRUSS HEAD, M3X6	
503	XB6-7300-606		5	SCREW, TP, M3X6	
504	XB1-2400-806		7	SCREW, MACH., TRUSS HEAD, M4X8	
505	XD1-4200-302		1	WASHER, TOOTHED LOCK	
506	XB4-7300-809		1	SCREW, TAPPING, TRUSS HEAD, M3X8	
507	XB4-7400-809		AR	SCREW, TAPPING, TRUSS HEAD, M4X8	
508	XB4-7400-806		AR	SCREW, TAPPING, TRUSS HEAD, M4X8	
509	XB4-7300-806		2	SCREW, TAPPING, TRUSS HEAD, M3X8	





# FIGURE P11 DOCUMENT TRAY ASSEMBLY

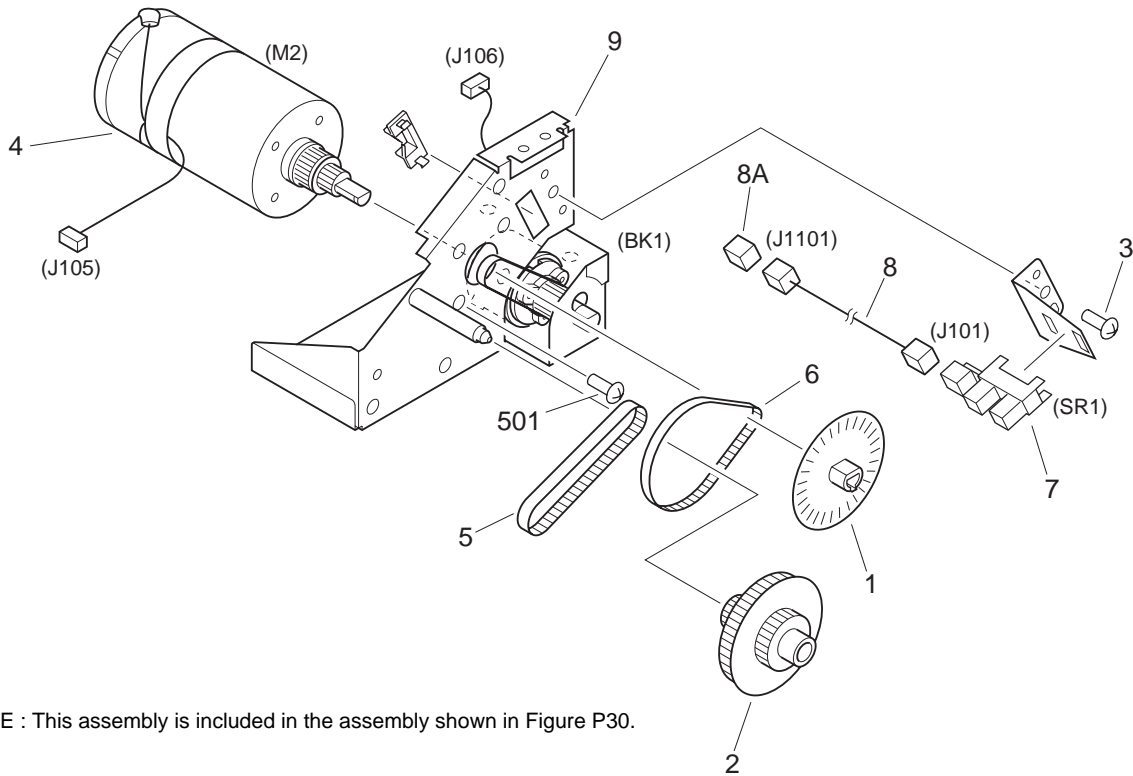


NOTE : This assembly does not include the parts shown with key No. 15, 16, 17 and 503.

FIGURE & KEY NO.	PART NUMBER	RANK	QTY	DESCRIPTION	SERIAL NUMBER / REMARKS
P11 -	FG6-3958-000		1	DOCUMENT TRAY ASSEMBLY	DADF-B1 A/INCH SIZE
	FG6-3959-000		1	DOCUMENT TRAY ASSEMBLY	DADF-B1 A SIZE
	FG6-3960-000		1	DOCUMENT TRAY ASSEMBLY	DADF-B1 AB/INCH SIZE
	FG6-3961-000		1	DOCUMENT TRAY ASSEMBLY	DADF-B1 AB SIZE
	FG6-9725-000		1	DOCUMENT TRAY ASSEMBLY	DADF-K1
1	FG6-4562-000		1	ROTARY VR ASSEMBLY	
2	FB5-0504-000		1	TRAY, SUPPORT	DADF-B1
	FB6-4985-000		1	TRAY, AUXILIARY	DADF-K1
3	FB5-0505-000		1	COVER, TRAY, LOWER	DADF-B1
	FB6-4984-000		1	COVER, TRAY, LOWER	DADF-K1
4	FB5-0506-000		1	GUIDE, SIDE, FRONT	
5	FB5-0508-000		2	RACK	DADF-B1
	FB6-4986-000		2	RACK	DADF-K1
6	FB5-0510-000		1	PLATE, GROUNDING	
7	FB5-0511-000		1	BLOCK, LIMIT	DADF-B1
	FB6-4987-000		1	BLOCK, DOCUMENT WIDTH LIMIT	DADF-K1
8	FG6-4563-000		1	PRE-LAST SENSOR PCB ASSEMBLY	
9	FS6-0509-000		1	GEAR, 26T	
10	FB5-0507-000		1	GUIDE, PAPER SIDE, REAR	DADF-K1
	FF5-9485-000		1	GUIDE, SIDE, RIGHT	DADF-B1 A SIZE
	FF5-9492-000		1	GUIDE, SIDE, RIGHT	DADF-B1 A/INCH,AB/INCH SIZE
	FF5-9502-000		1	GUIDE,SIDE,RIGHT	DADF-B1 AB SIZE
10A	FS6-8851-000		1	LABEL, PAPER LOAD	DADF-B1 A SIZE
	FS6-8956-000		1	LABEL, PAPER LOAD	DADF-B1 A/INCH,AB/INCH SIZE
	FS6-8960-000		1	LABEL,PAPER LOAD	DADF-B1 AB SIZE
11	FG3-0491-000		1	TRAY CABLE	J401,801,1801
11A	VS1-6198-003		1	CONNECTOR, SNAP TIGHT	J801
12	FB6-4982-000		1	TRAY, DOCUMENT	DADF-K1
	FF5-9484-000		1	TRAY, DOCUMENT	DADF-B1 AB SIZE
	FF5-9489-000		1	TRAY, DOCUMENT	DADF-B1 A/INCH SIZE

FIGURE & KEY NO.	PART NUMBER	RANK	QTY	DESCRIPTION	SERIAL NUMBER / REMARKS
P11 - 12   12A	FF5-9490-000		1	TRAY, DOCUMENT	DADF-B1 A SIZE
	FF5-9491-000		1	TRAY, DOCUMENT	DADF-B1 AB/INCH SIZE
	FS6-8850-000		1	LABEL, DOCUMENT SIZE	DADF-B1 AB SIZE
	FS6-8852-000		1	LABEL, DOCUMENT SIZE	DADF-B1 A/INCH SIZE
	FS6-8853-000		1	LABEL, DOCUMENT SIZE	DADF-B1 A SIZE
13	FS6-8854-000		1	LABEL, DOCUMENT SIZE	DADF-B1 AB/INCH SIZE
	FB5-0418-000		1	WEIGHT, DELIVERY	DADF-B1
	FB6-4983-000		1	WEIGHT, DOCUMENT DELIVERY	DADF-K1
14	FS6-8958-000		1	LABEL, DOCUMENT SET	DADF-B1 AB SIZE
15	FS7-8348-000		1	LABEL, DOCUMENT SIZE	SEE NOTE DADF-K1 AB SIZE
16	FS7-8351-000		1	LABEL, DOCUMENT SIZE	SEE NOTE DADF-K1 A/INCH SIZE
	FS7-8352-000		1	LABEL, DOCUMENT SIZE	SEE NOTE DADF-K1 A SIZE
	FS7-8353-000		1	LABEL, DOCUMENT SIZE	SEE NOTE DADF-K1 AB/INCH SIZE
	FS6-8851-000		1	LABEL, PAPER LOAD	SEE NOTE DADF-K1 A SIZE
	FS6-8956-000		1	LABEL, PAPER LOAD	SEE NOTE DADF-K1 A/INCH,AB/INCH SIZE
17	FS6-8960-000		1	LABEL,PAPER LOAD	SEE NOTE DADF-K1 AB SIZE
	FS7-8349-000		1	LABEL, DOCUMENT INSTRUCTIONS	SEE NOTE DADF-K1 JAPANESE
	FS7-8354-000		1	LABEL, DOCUMENT INSTRUCTIONS	SEE NOTE DADF-K1 OTHER LANGUAGE
501	XB4-7300-809		9	SCREW,TAPPING,TRUSS HEAD,M3X8	
502	XB4-7300-609		2	SCREW,TAPPING,TRUSS HEAD,M3X6	
503	XB6-7400-806		2	SCREW,TP,M4X8	SEE NOTE

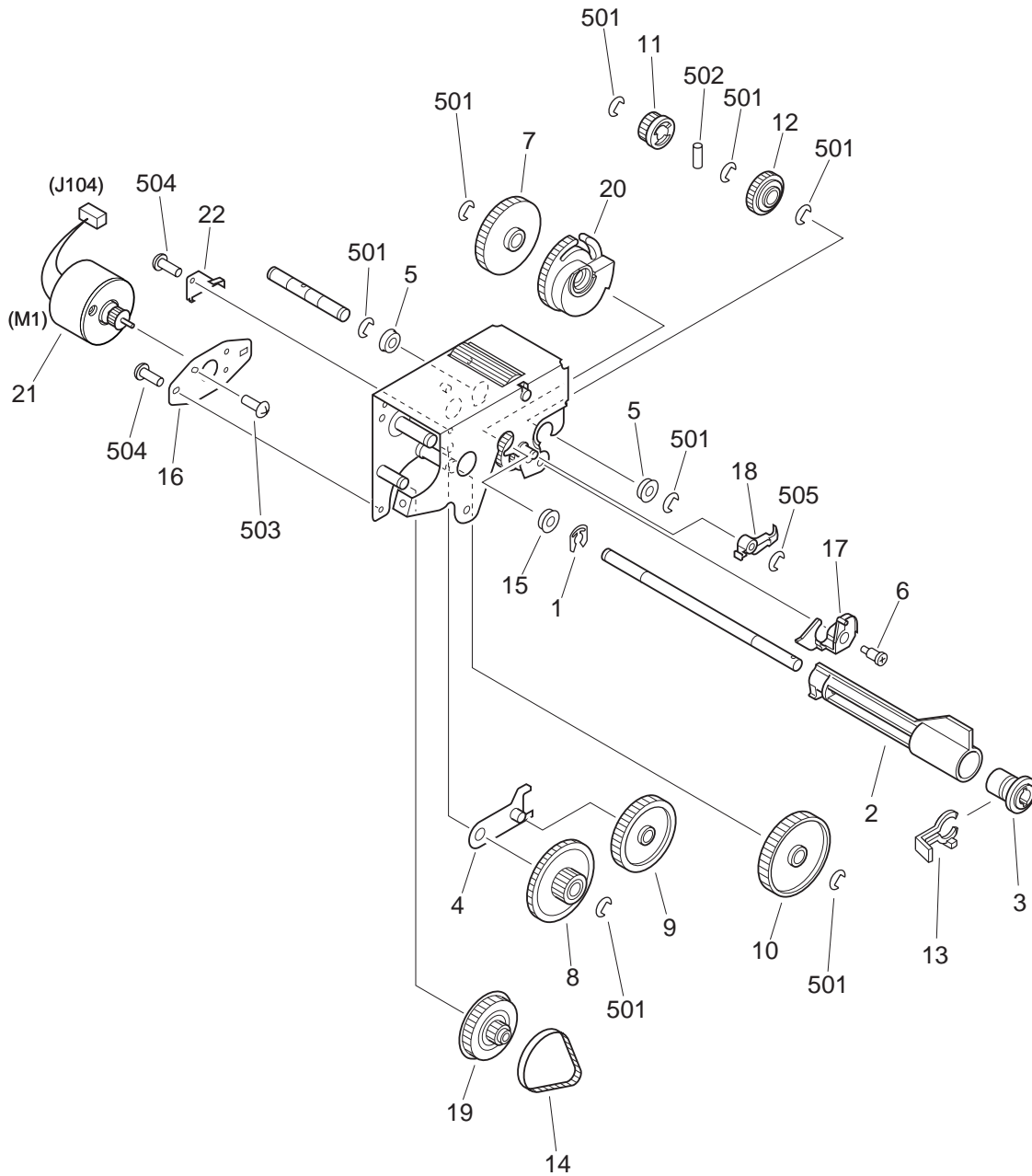
# FIGURE P20 FEEDER DRIVE ASSEMBLY



NOTE : This assembly is included in the assembly shown in Figure P30.

FIGURE & KEY NO.	PART NUMBER	RANK	QTY	DESCRIPTION	SERIAL NUMBER / REMARKS
P20 -	FG6-3962-000		1	FEEDER DRIVE ASSEMBLY	SEE NOTE DADF-B1
	FG6-9714-000		1	FEEDER DRIVE ASSEMBLY	SEE NOTE DADF-K1
1	FB5-0491-000		1	PLATE, CLOCK	
2	FS5-3760-000		1	PULLEY, 16T/63T/GEAR, 24T	
3	XA9-0892-000		1	SCREW,MACH.,TRUSS HEAD,M4X6	
4	FH5-1031-000		1	MOTOR, DC24V	DADF-K1 M2 J105
	FH6-1672-000		1	MOTOR, DC	DADF-B1 M2 J105
5	XF2-1106-080		1	BELT, TIMING	
6	XF2-1107-660		1	BELT, TIMING	
7	WG8-5426-000		1	PHOTO-INTERRUPTER	SR1 J101
8	FG3-0545-000		1	FEEDER CLOCK CABLE	J101,1101
8A	VS1-6198-003		1	CONNECTOR, SNAP TIGHT	J1101
9	FG6-3964-000		1	BRAKE UNIT	BK1 J106
501	XB1-2400-609		4	SCREW,MACH.,TRUSS HEAD,M4X6	

# FIGURE P21 SEPARATION DRIVE ASSEMBLY

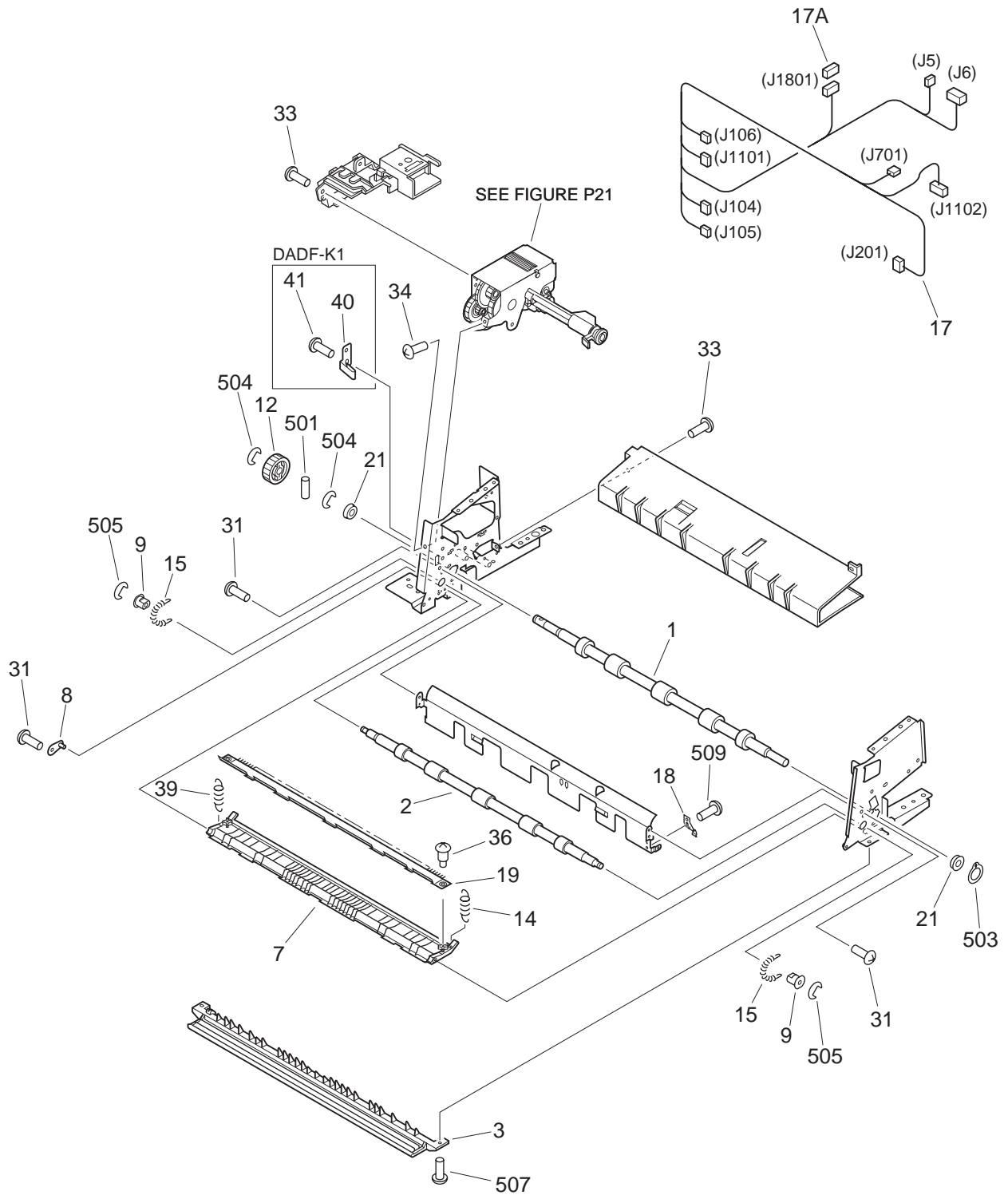


NOTE : This assembly is included in the assembly shown in Figure P30.

FIGURE & KEY NO.	PART NUMBER	RANK	QTY	DESCRIPTION	SERIAL NUMBER / REMARKS
P21 -	FG6-3963-000		1	SEPARATION DRIVE ASSEMBLY	SEE NOTE
1	FA3-8727-000		1	RING, RETAINING	
2	FB5-0483-000		1	JOINT, ROLLER, PICK-UP	
3	FB5-0484-000		1	COUPLING, SEPARATION ROLLER	
4	FF5-9165-000		1	PLATE, SWING	
5	FS1-1346-000		2	BUSHING	
6	FS5-9586-000		1	SCREW, STEPPED, M4	
7	FS6-0617-000		1	GEAR, PICK-UP, 44T	
8	FS7-0473-000		1	GEAR, 16T/64T/16T	
9	FS7-0474-000		1	GEAR, 38T	
10	FS7-0475-000		1	GEAR, 50T	
11	FS7-0478-000		1	GEAR, 14T	
12	FS7-0479-000		1	GEAR, 21T	
13	FB5-2225-000		1	CLIP, COUPLING	
14	XF2-1206-032		1	BELT, TIMING	
15	FS1-1508-000		1	BUSHING	
16	FB5-0478-000		1	PLATE, MOTOR	
17	FB5-0495-000		1	LINK, CAM, A	
18	FB5-0496-000		1	LINK, CAM, B	
19	FS5-3757-000		1	GEAR, 14T/PULLEY, 44T	
20	FS7-0481-000		1	GEAR, 44T	
21	FF5-9507-000		1	MOTOR, DC, 24W	M1 J104
22	FB5-2208-000		1	SPRING, LEAF	
501	XD2-1100-502		8	RING, E	
502	XD3-2200-102		1	PIN, DOWEL	
503	XB1-2260-409		2	SCREW, MACH., TRUSS HEAD, M2.6X4	
504	XB1-2300-609		3	SCREW, MACH., TRUSS HEAD, M3X6	
505	XD2-1100-402		1	RING, E	

# FIGURE P30

## DOCUMENT PICK-UP ASSEMBLY (1/2)



NOTE 1 : This assembly includes the assemblies shown in Figure P20,P21,P31,P32 and P33.

NOTE 2 : This assembly does not include the parts shown with key No. 37 and 510.

# FIGURE P30

## DOCUMENT PICK-UP ASSEMBLY (2/2)

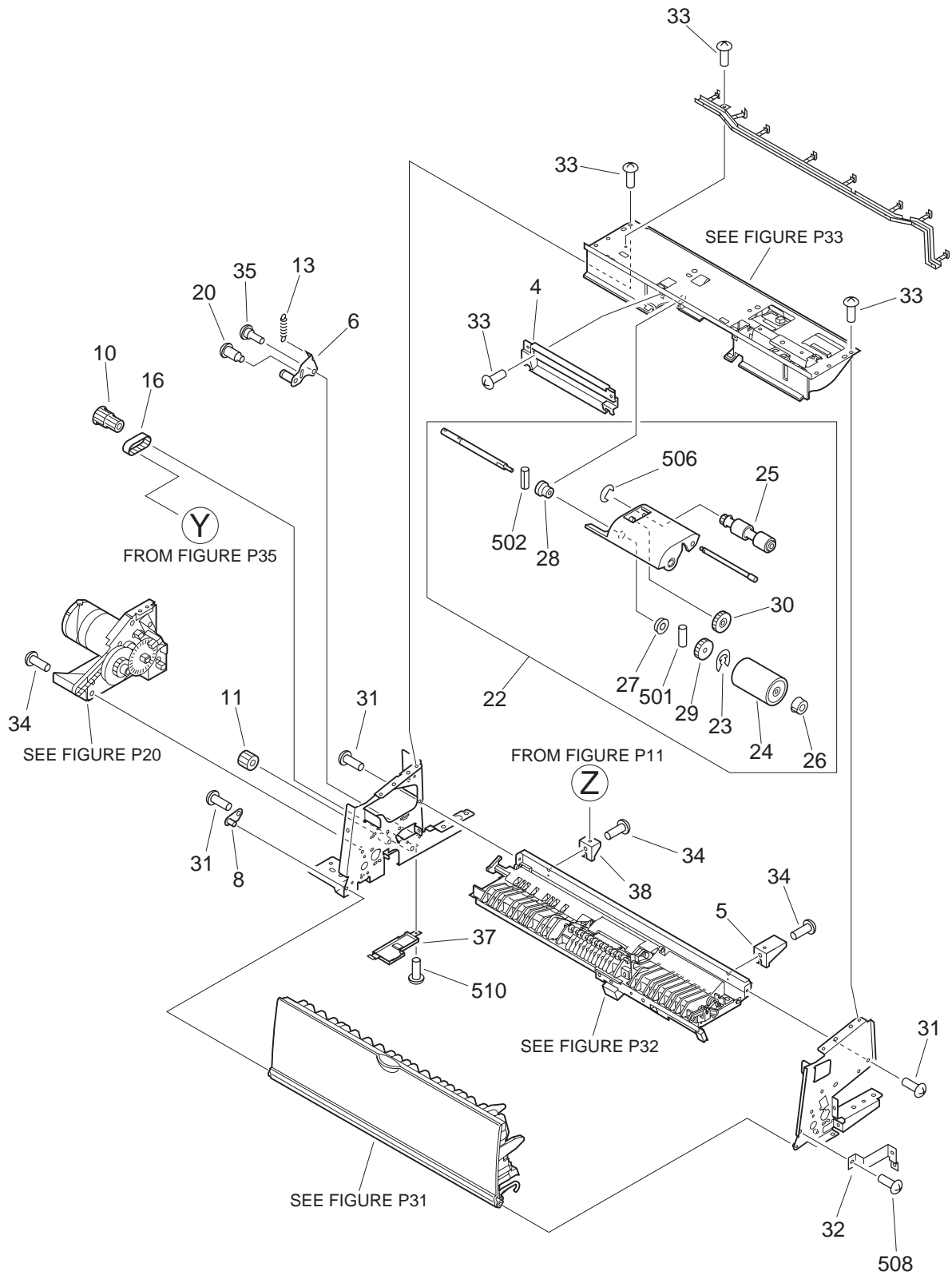




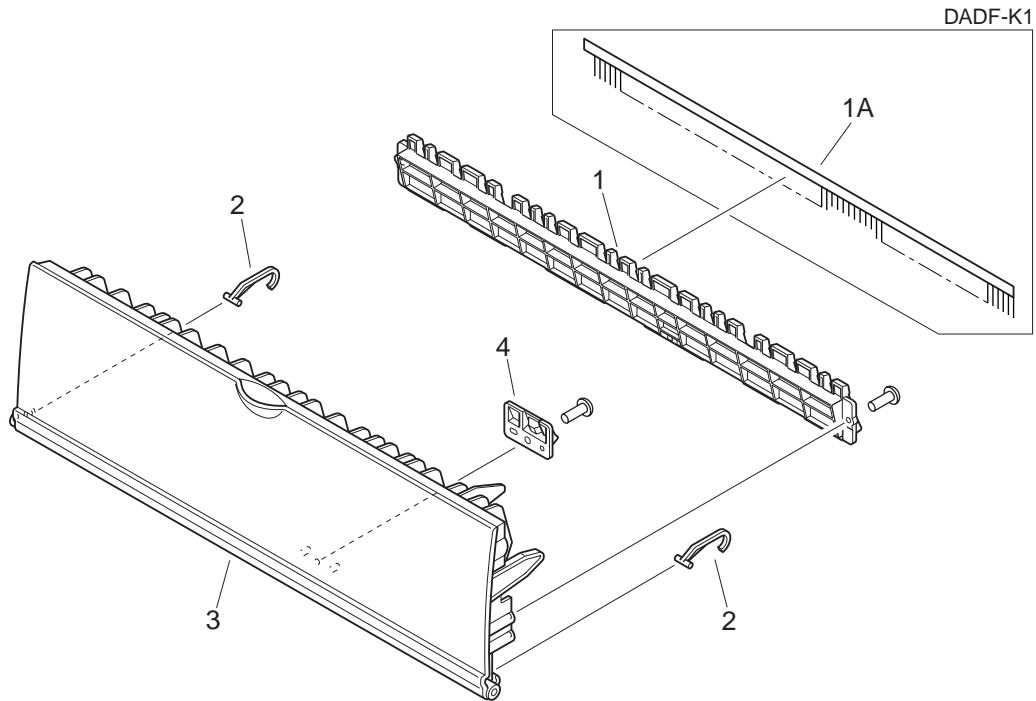
FIGURE & KEY NO.	PART NUMBER	RANK	QTY	DESCRIPTION	SERIAL NUMBER / REMARKS	
P30 -  1	FG6-3950-100		1	DOCUMENT PICK-UP ASSEMBLY	SEE NOTE 1 DADF-B1	
	FG6-9711-000		1	DOCUMENT PICK-UP ASSEMBLY	SEE NOTE 1 DADF-K1	
	FB5-0430-000		1	ROLLER, REGISTRATION, 1	DADF-B1	
	FB6-4964-000		1	ROLLER, REGISTRATION, 1	DADF-K1	
	2	FB5-0431-000		1	ROLLER, REGISTRATION, 2	
		-----				
3	FB5-0437-000		1	GUIDE, DOCUMENT PICK-UP, LOWER	DADF-B1	
	FB6-4965-000		1	GUIDE, DOCUMENT PICK-UP, LOWER	DADF-K1	
4	FB5-0440-020		1	COVER, SEPARATION ROLLER		
5	FB5-0475-000		1	SUPPORT, TRAY		
6	FF5-9156-000		1	ROLLER, TENSION		
-----						
7	FF5-9158-000		1	GUIDE, DOCUMENT, CENTER	DADF-B1	
	FF6-2449-000		1	GUIDE, PAPER PICK-UP, CENTER	DADF-K1	
8	FF5-9159-000		2	PLATE, COVER MOUNT		
9	FS6-1139-000		2	BUSHING		
10	FS5-3758-000		1	PULLEY, 14T/25T		
-----						
11	FS7-0467-000		1	GEAR, 20T	DADF-B1	
	FU3-0486-000		1	GEAR, 20T	DADF-K1	
12	FS7-0468-000		1	GEAR, 34T		
13	FS7-2231-000		1	SPRING, TENSION		
14	FS7-2232-000		1	SPRING, TENSION		
-----						
15	FS7-2233-000		2	SPRING, TENSION		
16	XF2-1303-495		1	BELT, TIMING		
17	FG3-0488-000		1	PICK-UP CABLE	J5,6,104-106,201,701 J1101,1102,1801	
17A	VS1-5057-008		1	CONNECTOR, SNAP TIGHT	J1801	
18	FB5-0500-000		1	PLATE, GROUNDING		
-----						
19	FF5-9157-020		1	GUIDE, INTERNAL, PICK-UP		
20	FS2-9394-000		1	SCREW, STEPPED, M3X1.4		
21	FS1-1510-000		2	BUSHING		
22	FG6-3954-000		1	SEPARATION ROLLER ASSEMBLY	DADF-B1	
	FG6-9713-000		1	SEPARATION ROLLER ASSEMBLY	DADF-K1	

FIGURE & KEY NO.	PART NUMBER	RANK	QTY	DESCRIPTION	SERIAL NUMBER / REMARKS
P30 - 23	FA3-8727-000		1	RING, RETAINING	
24	FB5-0466-000		1	ROLLER, SEPARATION	DADF-B1
	FB6-4978-000		1	ROLLER, SEPARATION	DADF-K1
25	FB4-1151-000		1	ROLLER, PAPER PICK-UP	DADF-B1
	FB6-4977-000		1	ROLLER, PAPER PICK-UP	DADF-K1
26	FS1-1528-000		1	BUSHING	
27	FS2-1357-000		1	BUSHING	
28	FS5-1903-000		1	BUSHING	
29	FS7-0469-000		1	GEAR, 30T	
30	FS7-0470-000		1	GEAR, 35T	
31	FS5-9439-000		AR	SCREW, MACH., TRUSS HEAD, M3X4	
32	FB5-2233-000		1	PLATE, SUPPORT	
33	XA9-0894-000		AR	SCREW, M3X6	
34	XA9-0892-000		AR	SCREW, MACH., TRUSS HEAD, M4X6	
35	RS5-9061-000		1	SCREW, STEPPED, M3	
36	FS5-9563-000		2	SCREW, STEPPED, M3X1.4	
37	FB5-0501-040		1	COVER, BELT	SEE NOTE 2 DADF-B1
	FF6-2450-000		1	COVER, BELT	SEE NOTE 2 DADF-K1
38	FB5-2220-000		1	SUPPORT, TRAY, REAR	
39	FS7-2240-000		1	SPRING, TENSION	
40	FB6-4999-000		1	SPRING, LEAF, GROUNDING	DADF-K1
41	FS5-9439-000		1	SCREW, MACH., TRUSS HEAD, M3X4	DADF-K1
501	XD3-2200-122		2	PIN, DOWEL	
502	XD3-1200-082		1	PIN, SPRING	
503	XD2-2100-802		1	RING, GRIP	
504	XD2-1100-642		2	RING, E	
505	XD2-1100-502		2	RING, E	
506	XD2-1100-322		1	RING, E	
507	XB1-2300-607		2	SCREW, MACH., TRUSS HEAD, M3X6	
508	XB1-2300-409		3	SCREW, MACH., TRUSS HEAD, M3X4	

FIGURE & KEY NO.	PART NUMBER	R A N K	Q' T Y	DESCRIPTION	SERIAL NUMBER / REMARKS
P30 - 509	XB1-2300-406		1	SCREW,MACH.,TRUSS HEAD,M3X4	
510	XB6-7300-609		1	SCREW,TP,M3X6	SEE NOTE 2

# FIGURE P31

## DOCUMENT PICK-UP COVER ASSEMBLY

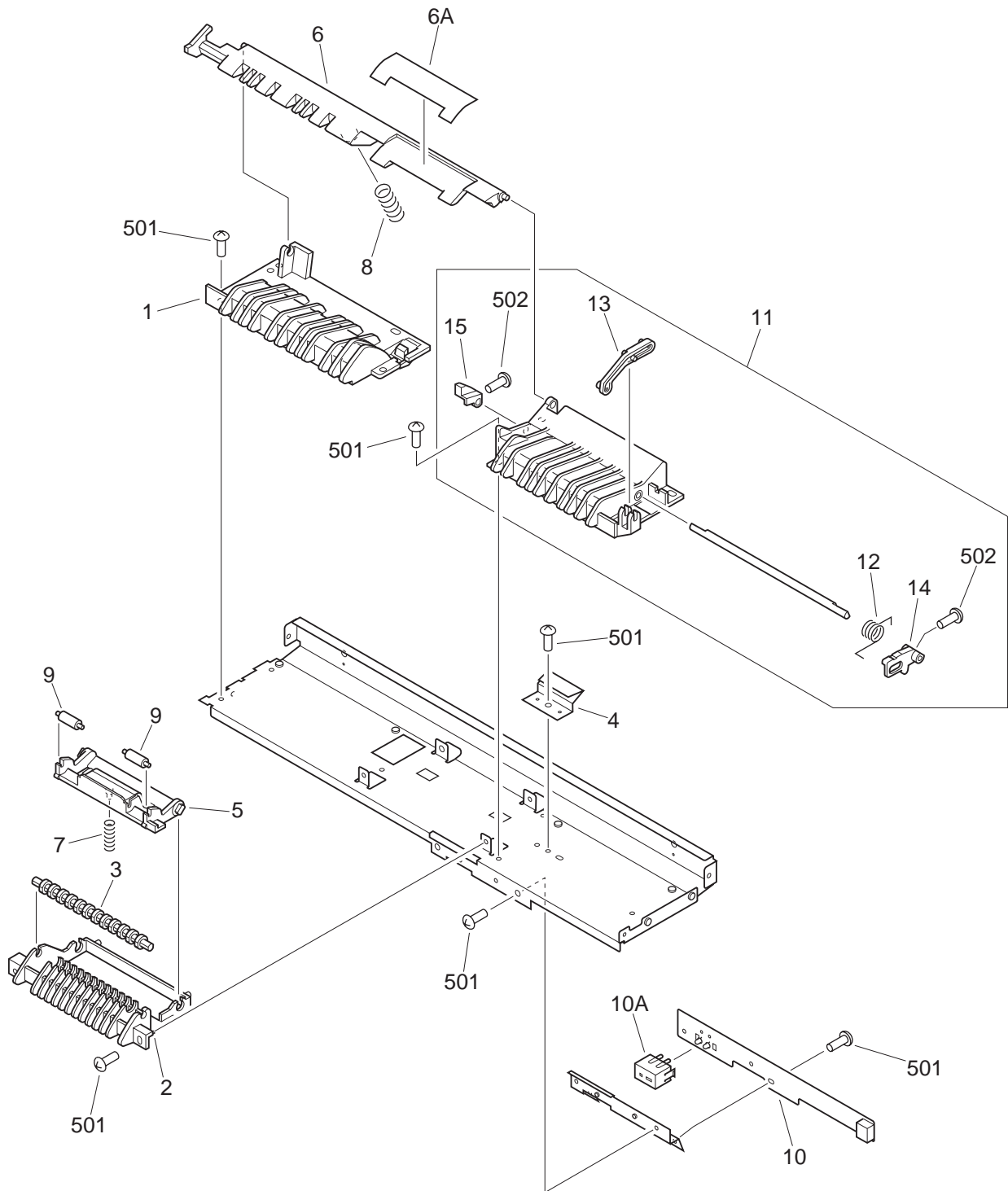


NOTE : This assembly is included in the assembly shown in Figure P30.

FIGURE & KEY NO.	PART NUMBER	RANK	QTY	DESCRIPTION	SERIAL NUMBER / REMARKS
P31 -	FG6-3956-030		1	DOCUMENT PICK-UP COVER ASS'Y	SEE NOTE DADF-B1
	FG6-9708-000		1	DOCUMENT PICK-UP COVER ASS'Y	SEE NOTE DADF-K1
1	FB5-0470-000		1	GUIDE, REGISTRATION, OUTER	DADF-B1
	FF6-2443-000		1	GUIDE, REGISTRATION, OUTER	DADF-K1
1A	FB6-4980-000		1	ELIMINATOR, STATIC CHARGE	DADF-K1
2	FB5-0472-000		2	ARM, RELEASE, REGISTRATION	
3	FF5-9162-030		1	COVER, UPPER	DADF-B1
	FF6-2454-000		1	COVER, DOCUMENT PICK-UP	DADF-K1
4	FF5-9163-000		1	PRISM, REGISTRATION	

# FIGURE P32

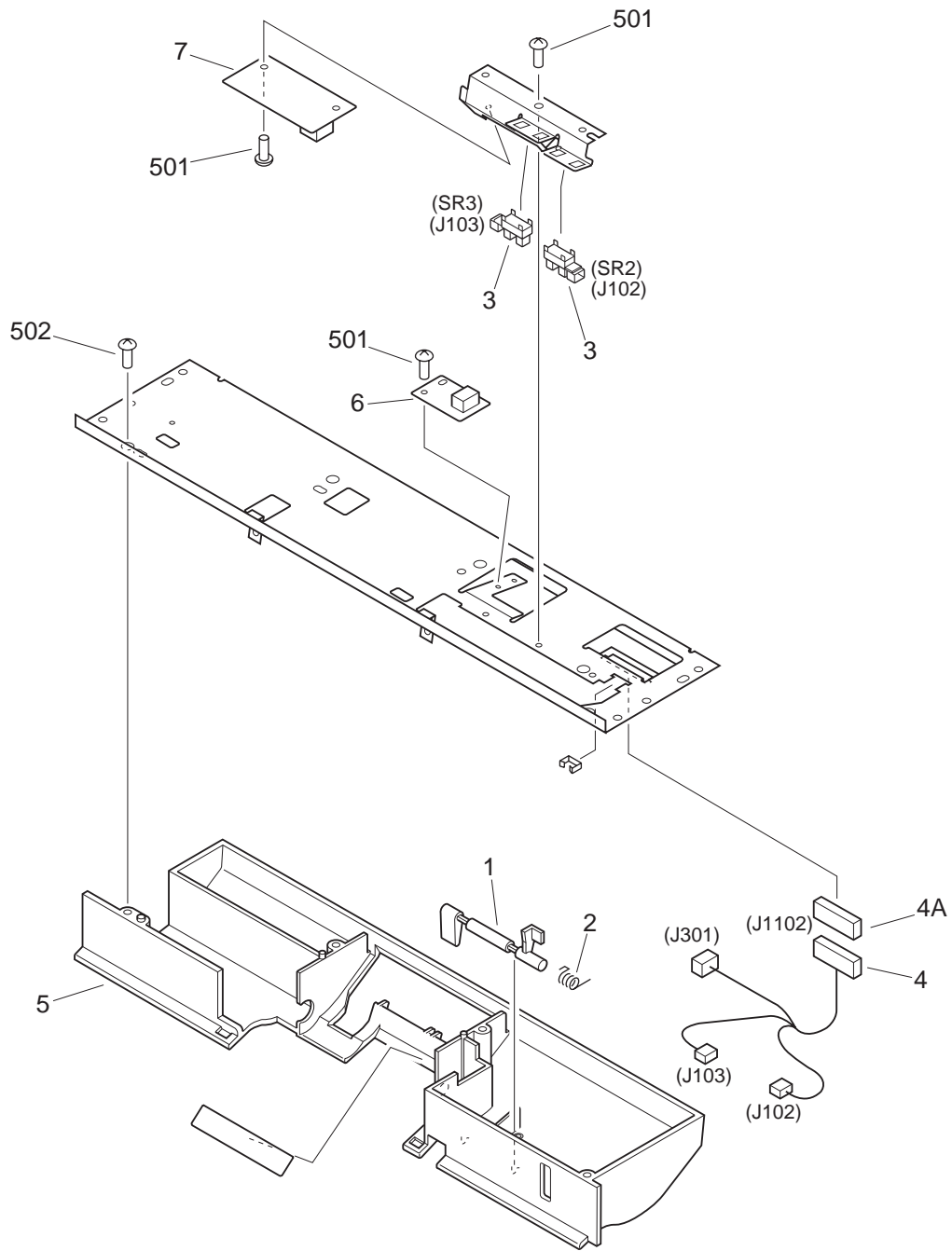
## SEPARATION LOWER GUIDE ASSEMBLY



NOTE : This assembly is included in the assembly shown in Figure P30.

FIGURE & KEY NO.	PART NUMBER	RANK	QTY	DESCRIPTION	SERIAL NUMBER / REMARKS
P32 -	FG6-3952-000		1	SEPARATION LOWER GUIDE ASS'Y	SEE NOTE DADF-B1
	FG6-9712-000		1	SEPARATION LOWER GUIDE ASS'Y	SEE NOTE DADF-K1
1	FB5-0451-000		1	GUIDE, SEPARATION LOWER, REAR	
2	FB5-0457-040		1	MOUNT, SEPARATION PAD	
3	FB5-0490-000		1	ROLLER, GUIDE	
4	FF5-9154-000		1	PRISM, DOCUMENT DETECTION	
5	FF5-9160-030		1	PAD, SEPARATION	DADF-B1
	FF6-2452-000		1	MOUNT, PAD ROLLER	DADF-K1
6	FF5-9161-000		1	LIFTER	DADF-B1
	FF6-2453-000		1	GUIDE, PAPER LIFTER	DADF-K1
6A	FB5-0494-000		1	SHEET	DADF-B1
	FB6-4975-000		1	SHEET, LIFTER	DADF-K1
7	FS6-2370-000		1	SPRING, COMPRESSION	DADF-B1
	FS7-2948-000		1	SPRING, COMPRESSION	DADF-K1
8	FS7-2234-000		1	SPRING, COMPRESSION	
9	FB6-4969-000		2	ROLLER, PAD	DADF-K1
	FS5-6703-000		2	ROLLER, PAD	DADF-B1
10	FG6-3953-000		1	PRE-REGISTRATION SENSOR ASS'Y	
10A	FB5-0474-000		1	CAP, LED	
11	FG6-3957-000		1	PAD RELEASE LEVER ASSEMBLY	
12	FB5-0452-000		1	SPRING, TORSION	
13	FB5-0454-000		1	LEVER, PAD RELEASE, 1	
14	FB5-0455-000		1	LEVER, PAD RELEASE, 2	
15	FB5-0456-000		1	LEVER, PAD RELEASE, 3	
501	XB1-2300-609		13	SCREW,MACH.,TRUSS HEAD,M3X6	
502	XB1-2300-409		2	SCREW,MACH.,TRUSS HEAD,M3X4	

# FIGURE P33 SEPARATION UPPER GUIDE ASSEMBLY



NOTE : This assembly is included in the assembly shown in Figure P30.

FIGURE & KEY NO.	PART NUMBER	RANK	QTY	DESCRIPTION	SERIAL NUMBER / REMARKS
P33 -	FG6-3951-000		1	SEPARATION UPPER GUIDE ASS'Y	SEE NOTE
1	FB5-0447-000		1	FLAG, SEPARATION SENSOR	
2	FB5-0498-000		1	SPRING, TORSION	
3	WG8-5362-000		2	IC, TLP1241, PHOTO-INTERRUPTER	SR2,3 J102,103
4	FG3-0490-000		1	PICK-UP CENTER CABLE	J102,103,301,1102
4A	VS1-5057-011		1	CONNECTOR, SNAP TIGHT	J1102
5	FF5-9483-000		1	GUIDE, SEPARATION UPPER	
6	FG3-0485-000		1	DISPLAY LED PCB ASSEMBLY	
7	FG3-0235-000		1	DOCUMENT SENSOR PCB ASSEMBLY	
501	XB1-2300-609		5	SCREW,MACH.,TRUSS HEAD,M3X6	
502	XB4-7400-809		4	SCREW,TAPPING,TRUSS HEAD,M4X8	



# FIGURE P35 FEEDER ASSEMBLY

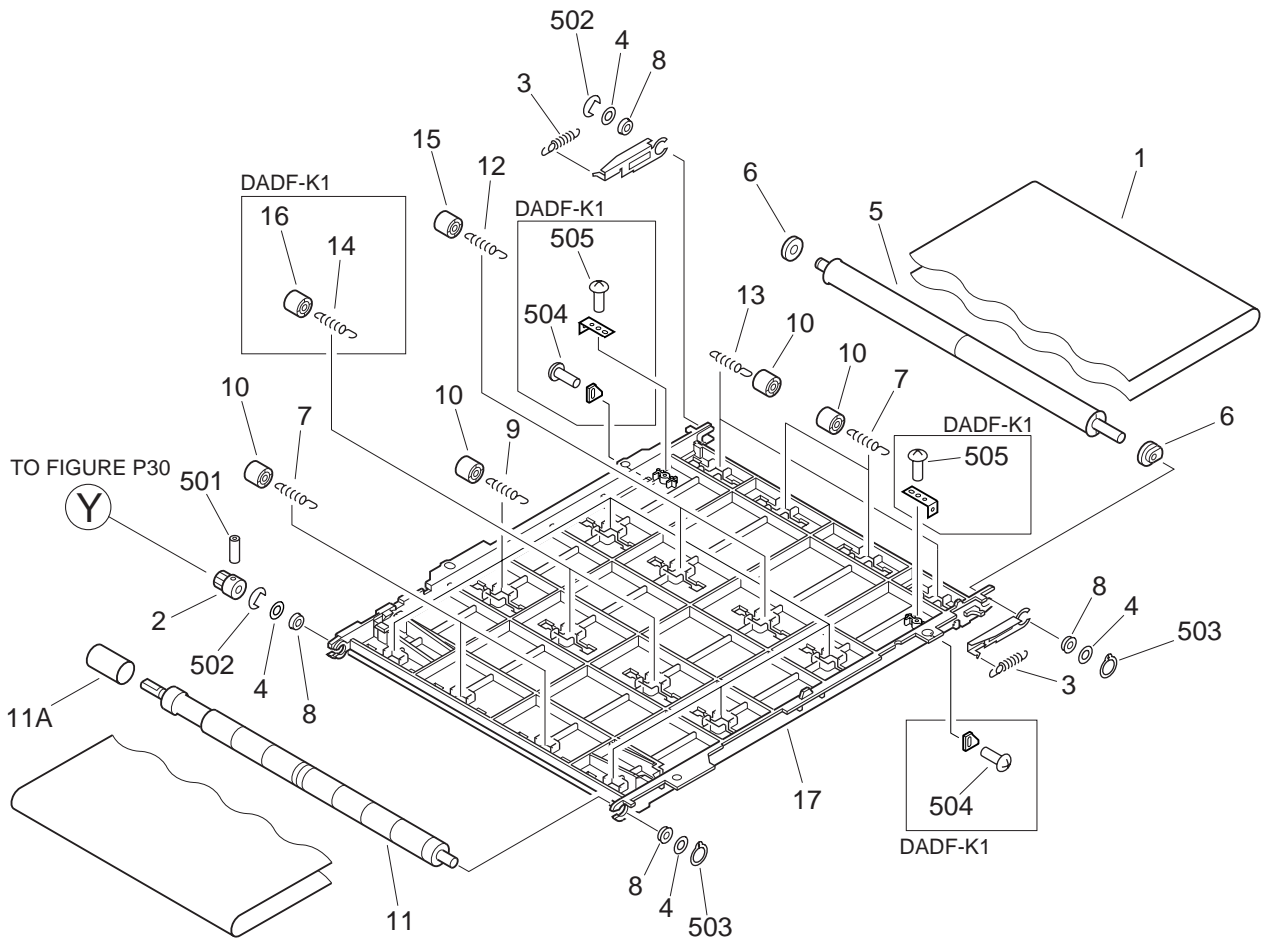


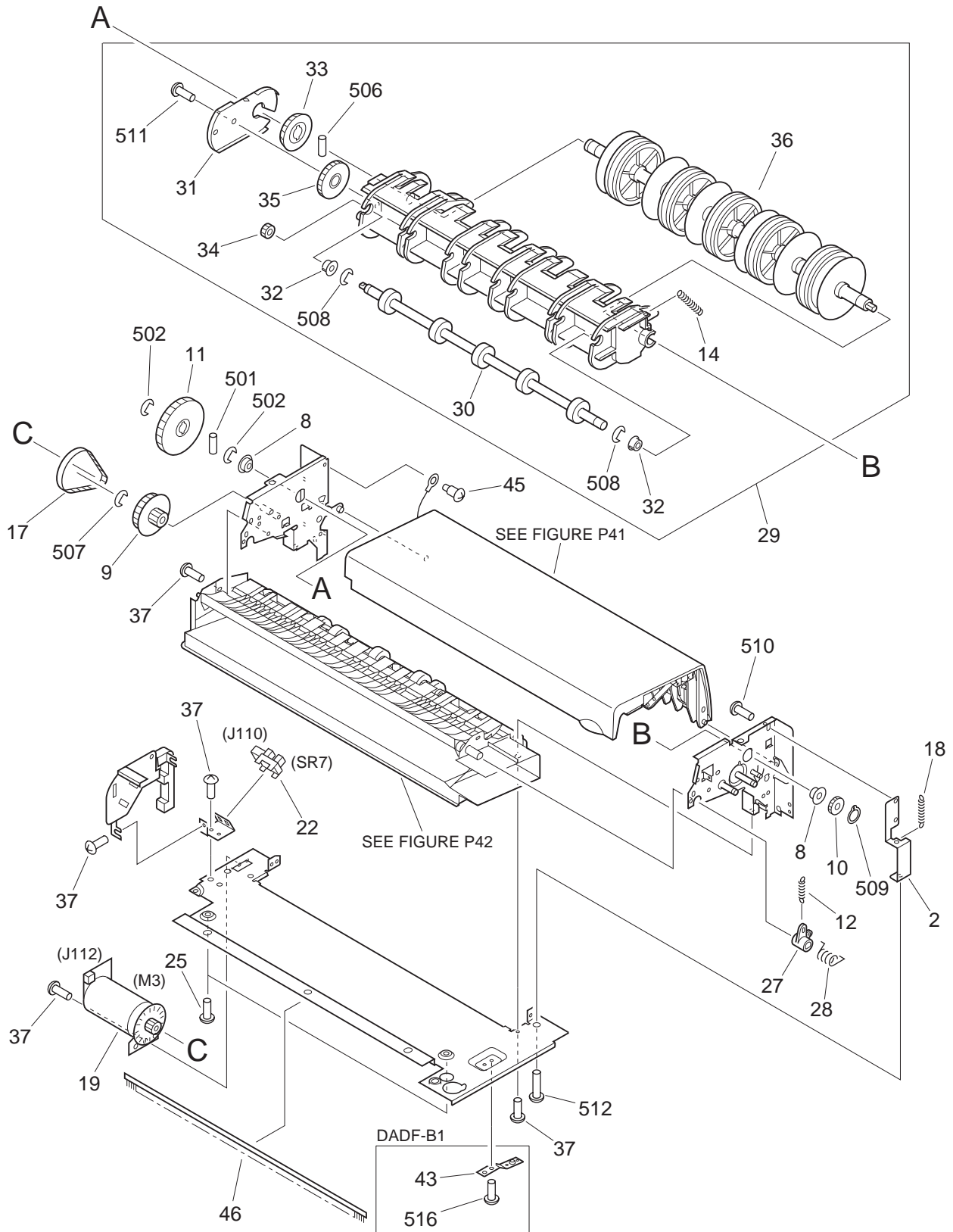
FIGURE & KEY NO.	PART NUMBER	RANK	QTY	DESCRIPTION	SERIAL NUMBER / REMARKS
P35 -	FG6-3965-040		1	FEEDER ASSEMBLY	DADF-B1
	FG6-9726-000		1	PAPER FEEDER ASSEMBLY	DADF-K1
	1	FB4-6934-000	1	BELT, FEEDER	
2	FB5-0521-000	1	PULLEY, 14T		
3	FS7-2239-000	2	SPRING, TENSION		
4	XD9-0151-000		4	WASHER	
5	FG6-3966-000		1	ROLLER, IDLER, FEEDER BELT	
6	FB5-0419-000		2	FLANGE	
7	FS7-2229-000		4	SPRING, TENSION	
8	XG9-0403-000		4	BEARING, BALL	
9	FS7-2230-000		6	SPRING, TENSION	DADF-B1
	FS7-2230-000		6	SPRING, TENSION	DADF-K1
10	FB5-2215-000		12	ROLLER, BELT PRESSURE	DADF-B1
	FB5-2215-000		12	ROLLER, BELT PRESSURE	DADF-K1
11	FG6-3967-020		1	ROLLER, DRIVE, FEEDER BELT	
11A	FB4-6918-000		8	RUBBER, ROLLER	DADF-B1
	FB6-4990-000		8	RUBBER, BELT FEED ROLLER	DADF-K1
12	FS7-2364-000		2	SPRING, TENSION	DADF-B1
	FS7-2949-000		2	SPRING, TENSION	DADF-K1
13	FS7-2230-000		2	SPRING, TENSION	DADF-B1
	FS7-2949-000		2	SPRING, TENSION	DADF-K1
14	FS7-2949-000		2	SPRING, TENSION	DADF-K1
15	FB5-2215-000		2	ROLLER, BELT PRESSURE	DADF-B1
	FB6-4991-000		2	ROLLER, BELT PRESSURE, LARGE	DADF-K1
16	FB6-4991-000		2	ROLLER, BELT PRESSURE, LARGE	DADF-K1
17	FB5-0519-050		1	FRAME,FEEDER BELT	DADF-B1
	FB6-4989-000		1	FRAME, FEEDER BELT	DADF-K1
501	XB6-2400-409		1	SETSCREW,M4X4	
502	XD2-1100-642		2	RING,E	
503	XD2-2100-802		2	RING,GRIP	

FIGURE & KEY NO.	PART NUMBER	R A N K	Q' T Y	DESCRIPTION	SERIAL NUMBER / REMARKS
P35 - 504	XB1-2301-006		2	SCREW,MACH.,TRUSS HEAD,M3X10	DADF-K1
505	XB4-7300-809		2	SCREW,TAPPING,TRUSS HEAD,M3X8	DADF-K1



# FIGURE P40

## REVERSE DELIVERY ASSEMBLY (1/2)



NOTE 1 : This assembly includes the assemblies shown in Figure P41, P42.

NOTE 2 : This assembly does not include the parts shown with key No. 43, 46 and 516.

# FIGURE P40

## REVERSE DELIVERY ASSEMBLY (2/2)

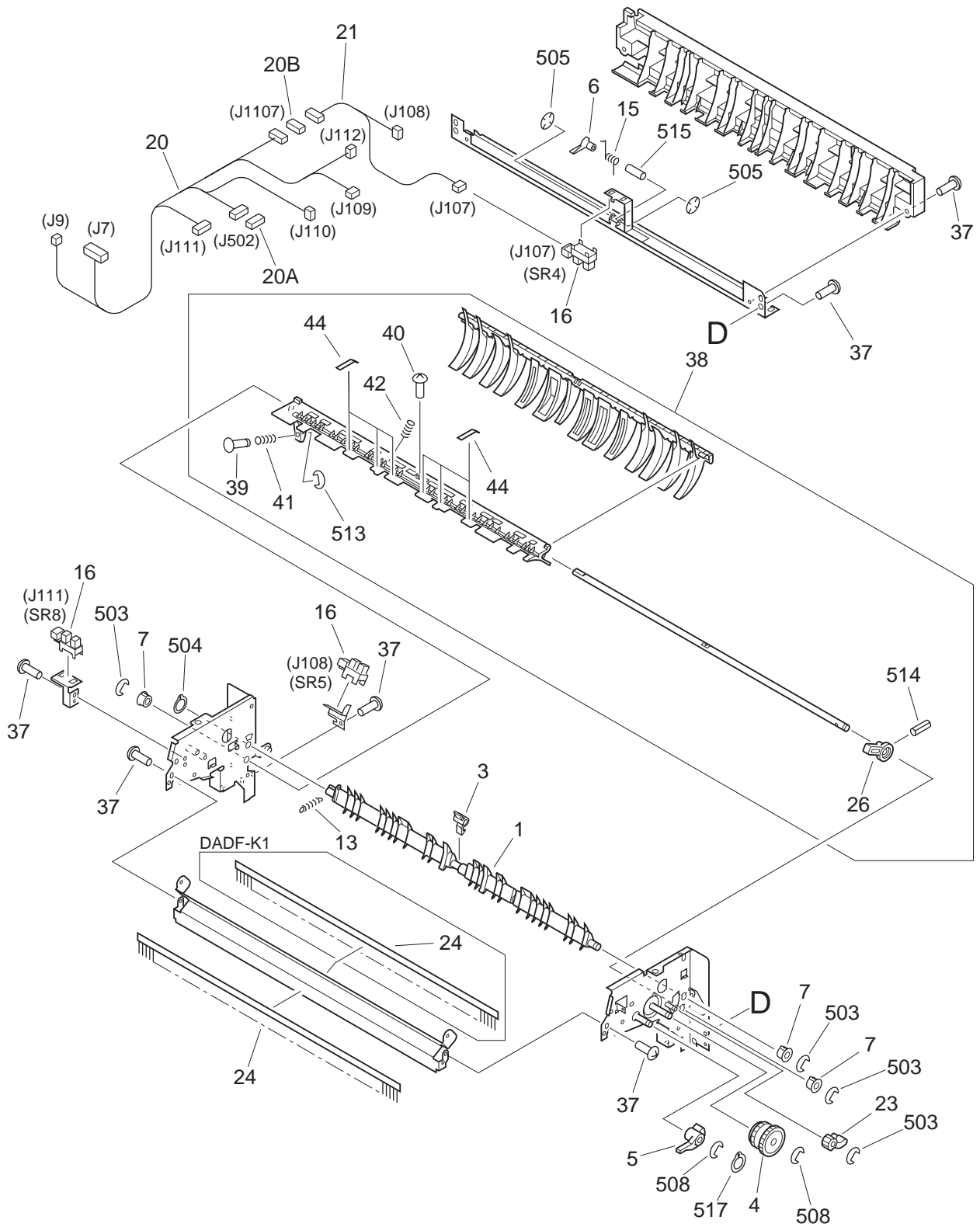


FIGURE & KEY NO.	PART NUMBER	RANK	QTY	DESCRIPTION	SERIAL NUMBER / REMARKS
P40 -	FG6-3938-200		1	REVERSE DELIVER ASSEMBLY	SEE NOTE 1 DADF-B1
	FG6-9706-000		1	REVERSE DELIVERY ASSEMBLY	SEE NOTE 1 DADF-K1
	1	FB5-0351-000		1	FLAPPER
2	FB5-0358-000		1	PLATE, FLAPPER ADJUSTMENT	
3	FB5-0363-020		1	FLAG, SENSOR, DELIVERY	
4	FB5-0364-030		1	LIMITTER, TORQUE, DELIVERY	
5	FB5-0365-000		1	GEAR, 34T	
6	FB5-0375-000		1	FLAG, SENSOR, INLET	
7	FS5-1897-000		3	BUSHING	
8	FS5-1898-000		2	BUSHING	
9	FS5-3754-000		1	PULLEY, 64T/GEAR, 12T	DADF-B1
	FU3-0483-000		1	GEAR, 12T/PULLEY,64T	DADF-K1
10	FS7-0462-000		1	GEAR, 16T	
11	FS7-0463-000		1	GEAR, 60T	
12	FS7-2222-000		1	SPRING, TENSION	
13	FS7-2223-000		1	SPRING, TENSION	
14	FS7-2225-000		1	SPRING, TENSION	
15	FS7-2226-000		1	SPRING, TORSION	
16	WG8-5362-000		3	IC, TLP1241, PHOTO-INTERRUPTER	SR4,5,8 J107,108,111
17	XF2-1108-740		1	BELT, TIMING	
18	FS7-2228-000		1	SPRING, TENSION	
19	FH6-1673-000		1	MOTOR, DC	M3 J112
20	FG3-0489-000		1	DELIVERY CABLE	J7,9,109-112,502 J1107
20A	VS1-6198-005		1	CONNECTOR, SNAP TIGHT	J502
20B	VS1-6198-006		1	CONNECTOR, SNAP TIGHT	J1107
21	FG3-0492-000		1	DELIVERY INLET CABLE	J107,108,1107
22	WG8-5426-000		1	PHOTO-INTERRUPTER	SR7 J110
23	FB5-0367-000		1	GEAR, 12T	
24	FB5-2218-020		1	STATIC CHARGE ELIMINATOR	DADF-B1
	FB5-2218-020		2	STATIC CHARGE ELIMINATOR	DADF-K1

FIGURE & KEY NO.	PART NUMBER	RANK	QTY	DESCRIPTION	SERIAL NUMBER / REMARKS
P40 - 25	XA9-0591-000		2	SCREW,M3X8	
26	FB5-0360-000		1	ARM, FLAPPER	
27	FB5-0414-000		1	ARM, FLAPPER, OUTLET	
28	FB5-0415-000		1	SPRING, TORSION	
29	FG6-3940-000		1	CENTER GUIDE ASSEMBLY	
30	FB5-0394-000		1	ROLLER, FEEDER	
31	FB5-0398-000		1	COVER, GEAR, FEEDER	
32	FS5-1899-000		2	BUSHING	
33	FS7-0464-000		1	GEAR, 50T	
34	FS7-0465-000		1	GEAR, 15T	
35	FS7-0466-000		1	GEAR, 58T	
36	FB5-0352-000		1	ROLLER, REVERSE	
37	XA9-0894-000	AR		SCREW,M3X6	
38	FG6-3941-060		1	INLET FLAPPER ASSEMBLY	
39	FB5-0403-000		1	SHAFT, FLAPPER COMPRESSION	
40	FB5-0405-000		1	SCREW,MACH.,PAN HEAD,M2X6	
41	FS7-2221-000		1	SPRING, COMPRESSION	
42	FS7-2227-000		1	SPRING, COMPRESSION	
43	FB5-0499-000		1	SPRING, LEAF	SEE NOTE 2 DADF-B1
44	FB5-2231-000		6	SHEET	
45	FS2-9480-000		1	SCREW, STEPPED, M3X3	
46	FB5-2224-000		1	STATIC CHARGE ELIMINATOR	SEE NOTE 2
501	XD3-2200-122		1	PIN,DOWEL	
502	XD2-1100-642		3	RING,E	
503	XD2-1100-322		5	RING,E	
504	XD2-2100-502		2	RING,GRIP	
505	XD2-2300-202		2	RING,TOOTHED LOCK	
506	XD3-2200-142		1	PIN,DOWEL	
507	XD2-1100-402		1	RING,E	
508	XD2-1100-502		4	RING,E	

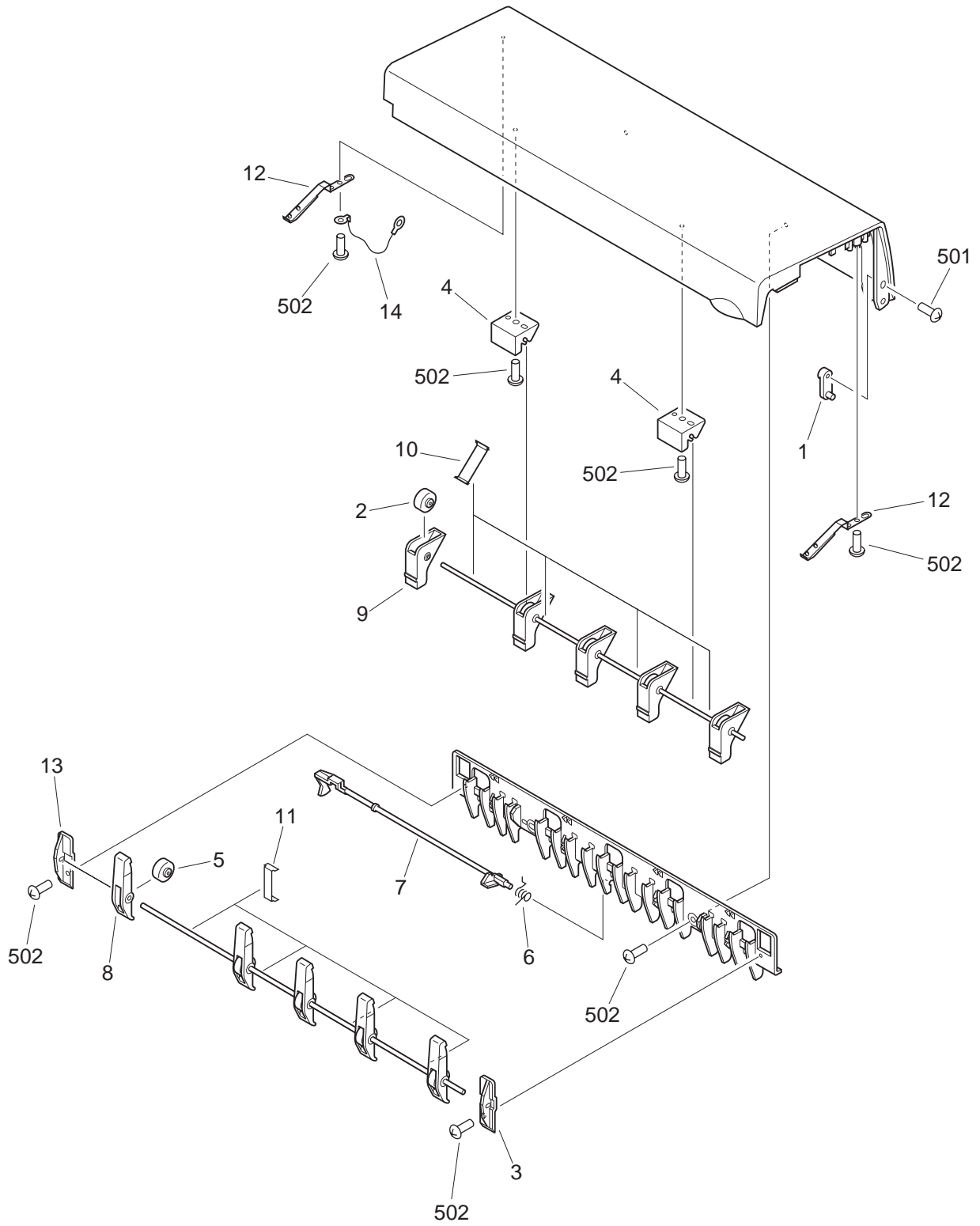


FIGURE & KEY NO.	PART NUMBER	RANK	QTY	DESCRIPTION	SERIAL NUMBER / REMARKS
P40 - 509	XD2-2100-402		1	RING,GRIP	
510	XB1-2400-609		1	SCREW,MACH.,TRUSS HEAD,M4X6	
511	XB4-7300-809		3	SCREW,TAPPING,TRUSS HEAD,M3X8	
512	XB6-7301-009		1	SCREW,TP,M3X10	
513	XD2-1100-242		1	RING,E	
514	XD3-1200-082		1	PIN,SPRING	
515	XD3-2200-182		1	PIN,DOWEL	
516	XB6-7300-606		1	SCREW,TP,M3X6	SEE NOTE 2 DADF-B1
517	XD2-2100-602		1	RING,GRIP	



# FIGURE P41

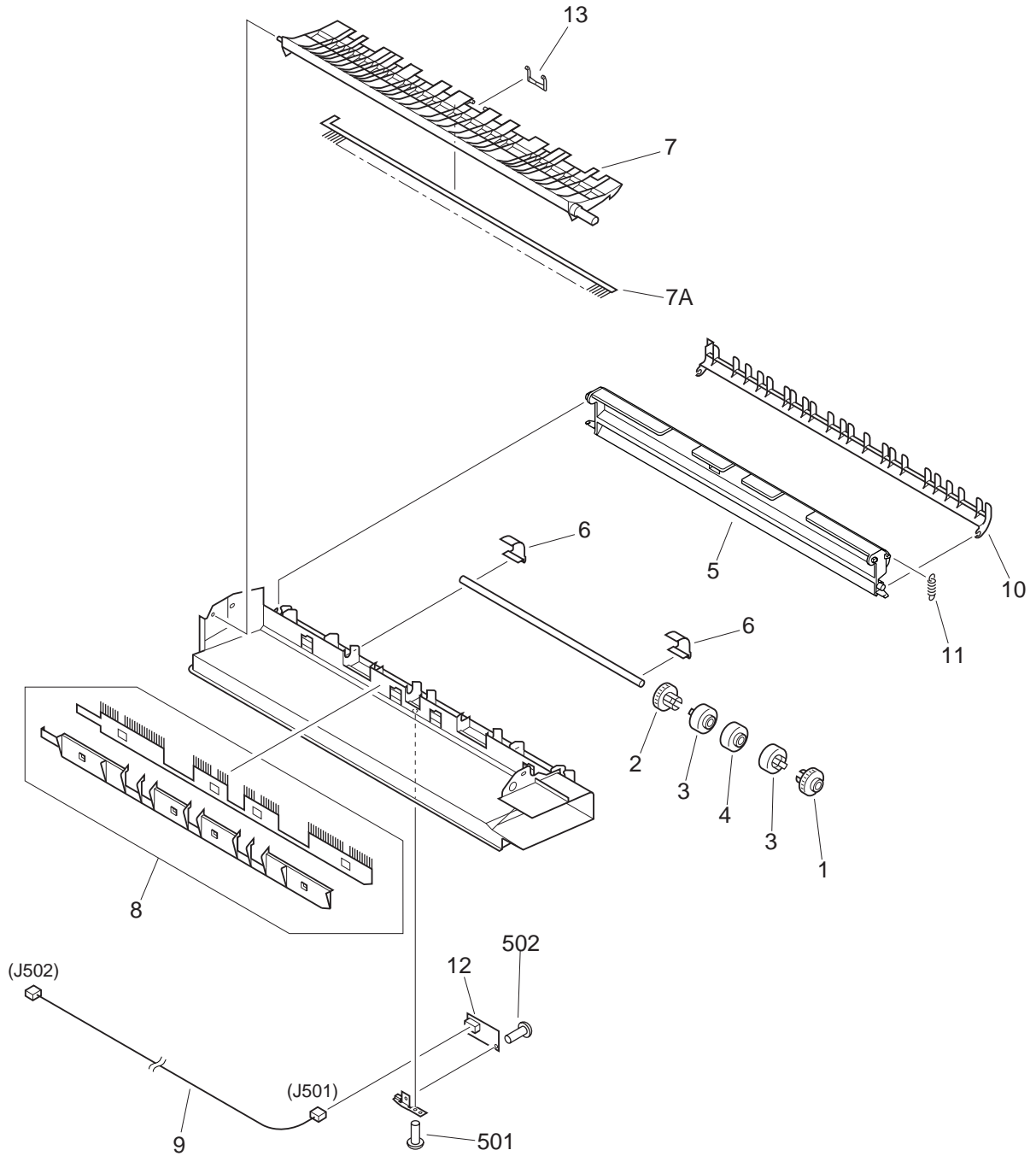
## REVERSE COVER ASSEMBLY



NOTE : This assembly is included in the assembly shown in Figure P40.

FIGURE & KEY NO.	PART NUMBER	RANK	QTY	DESCRIPTION	SERIAL NUMBER / REMARKS
P41 -	FG6-3939-000		1	REVERSE COVER ASSEMBLY	SEE NOTE DADF-B1
	FG6-9707-000		1	REVERSE COVER ASSEMBLY	SEE NOTE DADF-K1
	1	FB5-0350-000		1	PIN, POSITIONING
2	FB5-0371-000		5	ROLLER, DELIVERY, E	
3	FB5-0378-000		1	SUPPORT, REVERSE ROLLER, 1	
4	FB5-0379-000		2	SUPPORT, DELIVERY ROLLER	
5	FB5-0384-000		5	ROLLER, REVERSE, E	
6	FB5-0388-000		1	SPRING, TORSION	
7	FB5-0389-000		1	FLAG, SENSOR, PRE-REGISTRATION	
8	FB5-0390-000		5	HOLDER,ROLLER,REVERSE REGIST.	
9	FB5-0391-000		5	HOLDER, DELIVERY ROLLER	
10	FB5-0392-000		4	SPRING, LEAF	
11	FB5-0393-000		4	SPRING, LEAF	
12	FF5-9148-000		2	PLATE,COMPRESSION,CENTER GUIDE	
13	FB5-0377-000		1	SUPPORT, REVERSE ROLLER, 2	
14	FB5-2235-000		1	WIRE, REVERSE COVER	
501	XB4-7300-809		1	SCREW,TAPPING,TRUSS HEAD,M3X8	
502	XB4-7300-609		8	SCREW,TAPPING,TRUSS HEAD,M3X6	

# FIGURE P42 DOCUMENT DELIVERY ASSEMBLY



NOTE : This assembly is included in the assembly shown in Figure P40.

FIGURE & KEY NO.	PART NUMBER	RANK	QTY	DESCRIPTION	SERIAL NUMBER / REMARKS
P42 -	FG6-3942-000		1	DOCUMENT DELIVERY ASSEMBLY	SEE NOTE DADF-B1
	FG6-9709-000		1	DOCUMENT DELIVERY ASSEMBLY	SEE NOTE DADF-K1
1	FB5-0396-000		1	ROLLER, OUTLET, FRONT	
2	FB5-0397-000		1	ROLLER, OUTLET, REAR	
3	FB5-0399-000		2	ROLLER, DELIVERY, 1	
4	FB5-0407-000		1	ROLLER, DELIVERY, 2	
5	FB6-4998-000		1	GUIDE, DELIVERY, INTERNAL	
6	FB5-0413-000		2	SPRING, LEAF	
7	FF5-9151-000		1	FLAPPER, OUTLET	DADF-B1
	FF6-2444-000		1	DEFLECTOR, DOCUMENT DELIVERY	DADF-K1
7A	FB5-0410-000		1	STATIC CHARGE ELIMINATOR	
8	FF5-9170-030		1	HOLDER, STATIC CHARGE ELIM.	DADF-B1
	FF6-2445-000		1	ELIMINATOR, STATIC CHARGE	DADF-K1
9	FG3-0493-000		1	REVERSE SENSOR CABLE	J501,502
10	FB5-0354-000		1	GUIDE, SWING, INTERNAL	
11	FS7-2224-000		1	SPRING, TENSION	
12	FG3-0237-000		1	REVERSE SENSOR PCB ASSEMBLY	
13	FB5-2222-020		1	PLATE, END	DADF-B1
	FB6-4957-000		1	GUIDE, DOCUMENT END FACE-DOWN	DADF-K1
501	XB4-7300-809		1	SCREW,TAPPING,TRUSS HEAD,M3X8	
502	XB1-2300-409		1	SCREW,MACH.,TRUSS HEAD,M3X4	

# FIGURE P90 ADF CONTROLLER PCB ASSEMBLY

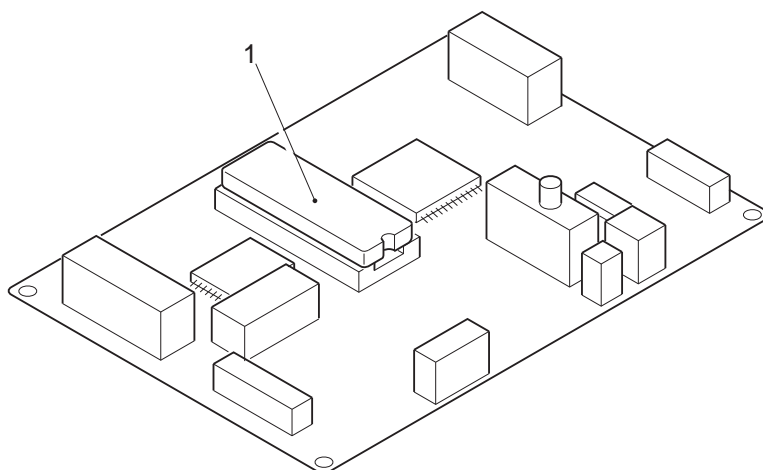


FIGURE & KEY NO.	PART NUMBER	RANK	QTY	DESCRIPTION	SERIAL NUMBER / REMARKS
P90 -	FG3-0233-110		1	ADF CONTROLLER PCB ASSEMBLY	DADF-B1 A/INCH,A SIZE AB/INCH SIZE
	FG3-1004-090		1	ADF CONTROLLER PCB ASSEMBLY	DADF-B1 AB SIZE
	FG3-2745-000		1	ADF CONTROLLER PCB ASSEMBLY	DADF-K1
1	FF3-3738-090		1	IC, M27C1001-80XF1, CMOS	Q2 DADF-B1 A/INCH,A SIZE
					AB/INCH SIZE
	FF3-3886-050		1	IC,M27C1001-80XF1,CMOS	Q2 DADF-B1 AB SIZE
	FF3-4498-000		1	IC,M27C1001-80XF1	Q2 DADF-K1
LED1	WG1-0373-000		1	LED, SEL2110RTP1	
LED2	WG1-0373-000		1	LED, SEL2110RTP1	
Q3	FH4-5560-000		1	IC, M38881M2-010GP, IPC	
Q25	WA2-6170-000		1	TRANSISTOR, 2SJ303, FET	





# FIGURE PB LIST OF CONNECTORS

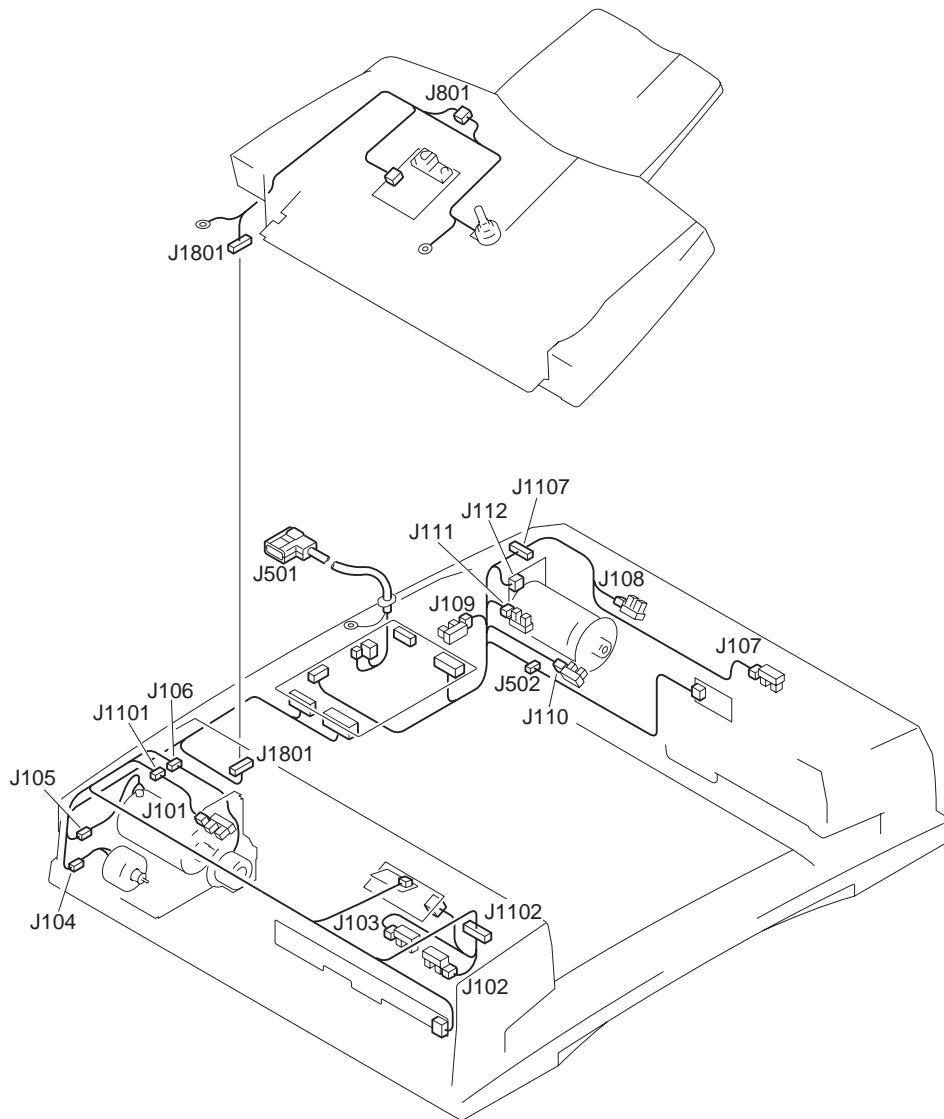


FIGURE & KEY NO.	PART NUMBER	R A N K	Q' T Y	DESCRIPTION	SERIAL NUMBER / REMARKS
P B -	NPN		RF	LIST OF CONNECTORS	
J1	PCB			ADF CONTROLLER PCB ASSEMBLY	
	VS3-5080-007		1	CONNECTOR, 7P, FEMALE	
J2	PCB			ADF CONTROLLER PCB ASSEMBLY	
	VS3-5083-002		1	CONNECTOR, 2P, FEMALE	
J3	PCB			ADF CONTROLLER PCB ASSEMBLY	
J5	PCB			ADF CONTROLLER PCB ASSEMBLY	
	VS1-0279-006		1	CONNECTOR, 6P, FEMALE	
J6	PCB			ADF CONTROLLER PCB ASSEMBLY	
	VS1-6313-015		1	CONNECTOR, 15P, FEMALE	
	VS1-6314-015		1	CONNECTOR, 15P, FEMALE	
	VT2-5161-030		1	HOLDER, CONNECTOR, 30P	
J7	PCB			ADF CONTROLLER PCB ASSEMBLY	
	VS1-6313-011		1	CONNECTOR, 11P, FEMALE	
	VS1-6314-011		1	CONNECTOR, 11P, FEMALE	
	VT2-5161-022		1	HOLDER, CONNECTOR, 22P	
J9	PCB			ADF CONTROLLER PCB ASSEMBLY	
	VS1-0279-002		1	CONNECTOR, 2P, FEMALE	
J10	PCB			ADF CONTROLLER PCB ASSEMBLY	
J101	NPN			FEEDER CLOCK SENSOR	SR1
J102	NPN		1	CONNECTOR, 3P, FEMALE	
	VS1-0842-003		1	CONNECTOR, 3P, FEMALE	SR2
J103	NPN			SEPARATION SENSOR	SR3
	VS1-0842-003		1	CONNECTOR, 3P, FEMALE	
J104	NPN			SEPARATION MOTOR	M1
	VS1-0280-003		1	CONNECTOR, 3P, FEMALE	
J105	NPN			FEEDER MOTOR	M2
	VS1-0279-002		1	CONNECTOR, 2P, FEMALE	
J106	NPN			ELECTROMAGNETIC BRAKE	BK1

FIGURE & KEY NO.	PART NUMBER	RANK	QTY	DESCRIPTION	SERIAL NUMBER / REMARKS
P B - J106	VS1-0280-002		1	CONNECTOR, 2P, FEMALE	
J107	NPN			INLET GUIDE SENSOR	SR4
	VS1-0842-003		1	CONNECTOR, 3P, FEMALE	
J108	NPN			DELIVERY REGISTRATION SENSOR	SR5
	VS1-0842-003		1	CONNECTOR, 3P, FEMALE	
J109	NPN			MAIN COVER OPEN SENSOR	SR6
	VS1-6320-003		1	CONNECTOR, 3P, MALE	
J110	NPN			DELIVERY CLOCK SENSOR	SR7
	VS1-6320-003		1	CONNECTOR, 3P, MALE	
J111	NPN			DELIVERY COVER SENSOR	SR8
J112	VS1-6320-003		1	CONNECTOR, 3P, MALE	
	NPN			DELIVERY MOTOR	M3
	VS3-0172-003		1	CONNECTOR, 3P, FEMALE	
J201	PCB			REGISTRATION SENSOR PCB ASS'Y	
	VS1-6320-005		1	CONNECTOR, 5P, FEMALE	
J301	PCB			DOCUMENT SENSOR PCB ASSEMBLY	
	VS1-0842-005		1	CONNECTOR, 5P, FEMALE	
J401	PCB			PRE-LAST SENSOR PCB ASSEMBLY	
	VS1-0842-005		1	CONNECTOR, 5P, FEMALE	
J501	FH2-6481-000		1	HOUSING	
J502	PCB			REVERSE SENSOR PCB ASSEMBLY	
	VS1-0842-005		1	CONNECTOR, 5P, FEMALE	
	VS3-5080-007		1	CONNECTOR, 7P, FEMALE	
	VS1-0842-005		1	CONNECTOR, 5P, FEMALE	
	VS1-6198-005		1	CONNECTOR, SNAP TIGHT	
J701	VS1-6321-005		1	CONNECTOR, 5P, FEMALE	
	PCB			DISPLAY LED PCB ASSEMBLY	
	VS1-6320-002		1	CONNECTOR, 2P, FEMALE	
J801	PCB			ROTARY VR PCB ASSEMBLY	
	VS1-0842-003		1	CONNECTOR, 3P, FEMALE	

FIGURE & KEY NO.	PART NUMBER	RANK	QTY	DESCRIPTION	SERIAL NUMBER / REMARKS
P B - J801	VS1-6198-003		1	CONNECTOR, SNAP TIGHT	
J1101	VS1-0842-003		1	CONNECTOR, 3P, FEMALE	
	VS1-6198-003		1	CONNECTOR, SNAP TIGHT	
	VS1-6321-003		1	CONNECTOR, 3P, FEMALE	
J1102	VS1-0842-011		1	CONNECTOR, 11P, FEMALE	
	VS1-5057-011		1	CONNECTOR, SNAP TIGHT	
	VS1-6321-011		1	CONNECTOR, 11P, FEMALE	
J1107	VS1-0842-006		1	CONNECTOR, 6P, FEMALE	
	VS1-6198-006		1	CONNECTOR, SNAP TIGHT	
	VS1-6321-006		1	CONNECTOR, 6P, FEMALE	
J1801	VS1-0842-008		1	CONNECTOR, 8P, FEMALE	
	VS1-5057-008		1	CONNECTOR, SNAP TIGHT	
	VS1-6320-008		1	CONNECTOR, 8P, FEMALE	



# PD NUMERICAL INDEX

PART NUMBER	FIGURE & KEY NO.	PART NUMBER	FIGURE & KEY NO.	PART NUMBER	FIGURE & KEY NO.
FA3-4725-000	P10 - 1	FB5-0511-000	P11 - 7	FF5-9503-000	P10 - 12
FA3-8727-000	P21 - 1	FB5-0512-000	P10 - 13	FF5-9504-000	P10 - 12
	P30 - 23	FB5-0519-050	P35 - 17	FF5-9507-000	P21 - 21
FB3-5699-000	P10 - 2	FB5-0521-000	P35 - 2	FF6-2443-000	P31 - 1
FB4-1151-000	P30 - 25	FB5-0524-000	P10 - 7	FF6-2444-000	P42 - 7
FB4-6890-000	P10 - 3	FB5-0525-020	P10 - 8	FF6-2445-000	P42 - 8
FB4-6918-000	P35 - 11A	FB5-0526-000	P10 - 9	FF6-2446-000	P10 - 12
FB4-6934-000	P35 - 1	FB5-2203-000	P10 - 22	FF6-2449-000	P30 - 7
FB4-6952-000	P10 - 14	FB5-2204-000	P01A - 5A	FF6-2450-000	P30 - 37
FB5-0350-000	P41 - 1	FB5-2205-000	P01A - 5A	FF6-2452-000	P32 - 5
FB5-0351-000	P40 - 1	FB5-2206-000	P01A - 5A	FF6-2453-000	P32 - 6
FB5-0352-000	P40 - 36	FB5-2207-000	P10 - 17	FF6-2454-000	P31 - 3
FB5-0354-000	P42 - 10	FB5-2208-000	P21 - 22	FF6-2457-000	P01B - 1
FB5-0358-000	P40 - 2	FB5-2215-000	P35 - 10	FG3-0233-110	P90 -
FB5-0360-000	P40 - 26		P35 - 10	FG3-0235-000	P33 - 7
FB5-0363-020	P40 - 3		P35 - 15	FG3-0237-000	P42 - 12
FB5-0364-030	P40 - 4	FB5-2218-020	P40 - 24	FG3-0485-000	P33 - 6
FB5-0365-000	P40 - 5		P40 - 24	FG3-0487-000	P10 - 19
FB5-0367-000	P40 - 23	FB5-2220-000	P30 - 38	FG3-0488-000	P30 - 17
FB5-0371-000	P41 - 2	FB5-2222-020	P42 - 13	FG3-0489-000	P40 - 20
FB5-0375-000	P40 - 6	FB5-2223-000	P10 - 23	FG3-0490-000	P33 - 4
FB5-0377-000	P41 - 13	FB5-2224-000	P40 - 46	FG3-0491-000	P11 - 11
FB5-0378-000	P41 - 3	FB5-2225-000	P21 - 13	FG3-0492-000	P40 - 21
FB5-0379-000	P41 - 4	FB5-2231-000	P40 - 44	FG3-0493-000	P42 - 9
FB5-0381-000	P01A - 5A	FB5-2233-000	P30 - 32	FG3-0545-000	P20 - 8
FB5-0384-000	P41 - 5	FB5-2235-000	P41 - 14	FG3-1004-090	P90 -
FB5-0388-000	P41 - 6	FB6-4946-000	P10 - 4	FG3-2745-000	P90 -
FB5-0389-000	P41 - 7	FB6-4947-000	P10 - 8	FG6-3938-200	P40 -
FB5-0390-000	P41 - 8	FB6-4948-000	P10 - 9	FG6-3939-000	P41 -
FB5-0391-000	P41 - 9	FB6-4949-000	P10 - 7	FG6-3940-000	P40 - 29
FB5-0392-000	P41 - 10	FB6-4957-000	P42 - 13	FG6-3941-060	P40 - 38
FB5-0393-000	P41 - 11	FB6-4964-000	P30 - 1	FG6-3942-000	P42 -
FB5-0394-000	P40 - 30	FB6-4965-000	P30 - 3	FG6-3950-100	P30 -
FB5-0396-000	P42 - 1	FB6-4969-000	P32 - 9	FG6-3951-000	P33 -
FB5-0397-000	P42 - 2	FB6-4975-000	P32 - 6A	FG6-3952-000	P32 -
FB5-0398-000	P40 - 31	FB6-4977-000	P30 - 25	FG6-3953-000	P32 - 10
FB5-0399-000	P42 - 3	FB6-4978-000	P30 - 24	FG6-3954-000	P30 - 22
FB5-0403-000	P40 - 39	FB6-4980-000	P31 - 1A	FG6-3956-030	P31 -
FB5-0405-000	P40 - 40	FB6-4982-000	P11 - 12	FG6-3957-000	P32 - 11
FB5-0407-000	P42 - 4	FB6-4983-000	P11 - 13	FG6-3958-000	P11 -
FB5-0410-000	P42 - 7A	FB6-4984-000	P11 - 3	FG6-3959-000	P11 -
FB5-0413-000	P42 - 6	FB6-4985-000	P11 - 2	FG6-3960-000	P11 -
FB5-0414-000	P40 - 27	FB6-4986-000	P11 - 5	FG6-3961-000	P11 -
FB5-0415-000	P40 - 28	FB6-4987-000	P11 - 7	FG6-3962-000	P20 -
FB5-0418-000	P11 - 13	FB6-4989-000	P35 - 17	FG6-3963-000	P21 -
FB5-0419-000	P35 - 6	FB6-4990-000	P35 - 11A	FG6-3964-000	P20 - 9
FB5-0420-000	P10 - 4	FB6-4991-000	P35 - 15	FG6-3965-040	P35 -
FB5-0423-000	P01A - 1A		P35 - 16	FG6-3966-000	P35 - 5
FB5-0426-030	P10 - 5	FB6-4993-000	P01B - 1A	FG6-3967-020	P35 - 11
FB5-0427-000	P10 - 6	FB6-4994-000	P01B - 2	FG6-4562-000	P11 - 1
FB5-0430-000	P30 - 1	FB6-4998-000	P42 - 5	FG6-4563-000	P11 - 8
FB5-0431-000	P30 - 2	FB6-4999-000	P30 - 40	FG6-9706-000	P40 -
FB5-0437-000	P30 - 3	FB6-5001-000	P10 - 5	FG6-9707-000	P41 -
FB5-0440-020	P30 - 4	FB6-5002-000	P10 - 6	FG6-9708-000	P31 -
FB5-0447-000	P33 - 1	FF3-3738-090	P90 - 1	FG6-9709-000	P42 -
FB5-0451-000	P32 - 1	FF3-3886-050	P90 - 1	FG6-9711-000	P30 -
FB5-0452-000	P32 - 12	FF3-4498-000	P90 - 1	FG6-9712-000	P32 -
FB5-0454-000	P32 - 13	FF5-9143-000	P10 - 12	FG6-9713-000	P30 - 22
FB5-0455-000	P32 - 14	FF5-9144-000	P01A - 1	FG6-9714-000	P20 -
FB5-0456-000	P32 - 15	FF5-9148-000	P41 - 12	FG6-9725-000	P11 -
FB5-0457-040	P32 - 2	FF5-9151-000	P42 - 7	FG6-9726-000	P35 -
FB5-0461-000	P10 - 21	FF5-9152-000	P01A - 5	FH2-6481-000	P B - J501
FB5-0466-000	P30 - 24	FF5-9154-000	P32 - 4	FH4-5560-000	P90 - Q3
FB5-0470-000	P31 - 1	FF5-9156-000	P30 - 6	FH5-1031-000	P20 - 4
FB5-0472-000	P31 - 2	FF5-9157-020	P30 - 19	FH6-1672-000	P20 - 4
FB5-0474-000	P32 - 10A	FF5-9158-000	P30 - 7	FH6-1673-000	P40 - 19
FB5-0475-000	P30 - 5	FF5-9159-000	P30 - 8	FS1-1346-000	P21 - 5
FB5-0478-000	P21 - 16	FF5-9160-030	P32 - 5	FS1-1508-000	P21 - 15
FB5-0483-000	P21 - 2	FF5-9161-000	P32 - 6	FS1-1510-000	P30 - 21
FB5-0484-000	P21 - 3	FF5-9162-030	P31 - 3	FS1-1528-000	P30 - 26
FB5-0490-000	P32 - 3	FF5-9163-000	P31 - 4	FS2-1357-000	P30 - 27
FB5-0491-000	P20 - 1	FF5-9165-000	P21 - 4	FS2-9394-000	P30 - 20
FB5-0494-000	P32 - 6A	FF5-9170-030	P42 - 8	FS2-9480-000	P40 - 45
FB5-0495-000	P21 - 17	FF5-9171-000	P01A - 2	FS5-1897-000	P40 - 7
FB5-0496-000	P21 - 18	FF5-9483-000	P33 - 5	FS5-1898-000	P40 - 8
FB5-0498-000	P33 - 2	FF5-9484-000	P11 - 12	FS5-1899-000	P40 - 32
FB5-0499-000	P40 - 43	FF5-9485-000	P11 - 10	FS5-1903-000	P30 - 28
FB5-0500-000	P30 - 18	FF5-9486-000	P01A - 5	FS5-3754-000	P40 - 9
FB5-0501-040	P30 - 37	FF5-9487-000	P01A - 5	FS5-3757-000	P21 - 19
FB5-0504-000	P11 - 2	FF5-9488-000	P01A - 5	FS5-3758-000	P30 - 10
FB5-0505-000	P11 - 3	FF5-9489-000	P11 - 12	FS5-3760-000	P20 - 2
FB5-0506-000	P11 - 4	FF5-9490-000	P11 - 12	FS5-6703-000	P32 - 9
FB5-0507-000	P11 - 10	FF5-9491-000	P11 - 12	FS5-9439-000	P30 - 31
FB5-0508-000	P11 - 5	FF5-9492-000	P11 - 10		P30 - 41
FB5-0510-000	P11 - 6	FF5-9502-000	P11 - 10	FS5-9546-000	P01B - 3

PART NUMBER	FIGURE & KEY NO.	PART NUMBER	FIGURE & KEY NO.	PART NUMBER	FIGURE & KEY NO.
FS5-9563-000	P30 - 36	PCB	P B - J701	XB4-7300-609	P41 - 502
FS5-9586-000	P21 - 6		P B - J801	XB4-7300-806	P10 - 509
FS5-9587-000	P10 - 18	RS5-9061-000	P30 - 35	XB4-7300-809	P10 - 506
FS5-9588-000	P10 - 20	VS1-0279-002	P B - J9		P11 - 501
FS5-9589-000	P01A - 3		P B - J105		P35 - 505
FS5-9590-000	P01A - 4	VS1-0279-006	P B - J5		P40 - 511
FS5-9591-000	P01A - 6	VS1-0280-002	P B - J106		P41 - 501
FS5-9774-000	P01B - 4	VS1-0280-003	P B - J104		P42 - 501
FS5-9775-000	P01B - 5	VS1-0842-003	P B - J101	XB4-7400-806	P10 - 508
FS6-0509-000	P11 - 9		P B - J102	XB4-7400-809	P10 - 507
FS6-0617-000	P21 - 7		P B - J103		P33 - 502
FS6-1139-000	P30 - 9		P B - J107	XB6-2400-409	P35 - 501
FS6-2370-000	P32 - 7		P B - J108	XB6-7300-606	P10 - 503
FS6-8850-000	P11 - 12A		P B - J801		P40 - 516
FS6-8851-000	P11 - 10A		P B - J1101	XB6-7300-609	P30 - 510
	P11 - 16	VS1-0842-005	P B - J301	XB6-7301-009	P40 - 512
FS6-8852-000	P11 - 12A		P B - J401	XB6-7400-806	P11 - 503
FS6-8853-000	P11 - 12A		P B - J501	XD1-4200-302	P10 - 505
FS6-8854-000	P11 - 12A		P B - J502	XD2-1100-242	P40 - 513
FS6-8956-000	P11 - 10A	VS1-0842-006	P B - J1107	XD2-1100-322	P30 - 506
	P11 - 16	VS1-0842-008	P B - J1801		P40 - 503
FS6-8958-000	P11 - 14	VS1-0842-011	P B - J1102	XD2-1100-402	P21 - 505
FS6-8960-000	P11 - 10A	VS1-5057-008	P30 - 17A		P40 - 507
	P11 - 16		P B - J1801	XD2-1100-502	P21 - 501
FS7-0462-000	P40 - 10	VS1-5057-011	P33 - 4A		P30 - 505
FS7-0463-000	P40 - 11		P B - J1102		P40 - 508
FS7-0464-000	P40 - 33	VS1-6198-003	P11 - 11A	XD2-1100-642	P30 - 504
FS7-0465-000	P40 - 34		P20 - 8A		P35 - 502
FS7-0466-000	P40 - 35		P B - J801		P40 - 502
FS7-0467-000	P30 - 11		P B - J1101	XD2-2100-402	P40 - 509
FS7-0468-000	P30 - 12	VS1-6198-005	P40 - 20A	XD2-2100-502	P40 - 504
FS7-0469-000	P30 - 29		P B - J502	XD2-2100-602	P40 - 517
FS7-0470-000	P30 - 30	VS1-6198-006	P40 - 20B	XD2-2100-802	P30 - 503
FS7-0473-000	P21 - 8		P B - J1107		P35 - 503
FS7-0474-000	P21 - 9	VS1-6313-011	P B - J7	XD2-2300-202	P40 - 505
FS7-0475-000	P21 - 10	VS1-6313-015	P B - J6	XD3-1200-082	P30 - 502
FS7-0478-000	P21 - 11	VS1-6314-011	P B - J7		P40 - 514
FS7-0479-000	P21 - 12	VS1-6314-015	P B - J6	XD3-2200-102	P21 - 502
FS7-0481-000	P21 - 20	VS1-6320-002	P B - J701	XD3-2200-122	P30 - 501
FS7-2012-000	P10 - 10	VS1-6320-003	P B - J109		P40 - 501
FS7-2221-000	P40 - 41		P B - J110	XD3-2200-142	P40 - 506
FS7-2222-000	P40 - 12		P B - J111	XD3-2200-182	P40 - 515
FS7-2223-000	P40 - 13	VS1-6320-005	P B - J201	XD9-0151-000	P35 - 4
FS7-2224-000	P42 - 11	VS1-6320-008	P B - J1801	XF2-1106-080	P20 - 5
FS7-2225-000	P40 - 14	VS1-6321-003	P B - J1101	XF2-1107-660	P20 - 6
FS7-2226-000	P40 - 15	VS1-6321-005	P B - J502	XF2-1108-740	P40 - 17
FS7-2227-000	P40 - 42	VS1-6321-006	P B - J1107	XF2-1206-032	P21 - 14
FS7-2228-000	P40 - 18	VS1-6321-011	P B - J1102	XF2-1303-495	P30 - 16
FS7-2229-000	P35 - 7	VS3-0172-003	P B - J112	XG9-0403-000	P35 - 8
FS7-2230-000	P35 - 9	VS3-5080-007	P B - J1		
	P35 - 9		P B - J501		
	P35 - 13	VS3-5083-002	P B - J2		
FS7-2231-000	P30 - 13	VT2-5161-022	P B - J7		
FS7-2232-000	P30 - 14	VT2-5161-030	P B - J6		
FS7-2233-000	P30 - 15	WA2-6170-000	P90 - Q25		
FS7-2234-000	P32 - 8	WG1-0373-000	P90 - LED1		
FS7-2236-000	P10 - 15		P90 - LED2		
FS7-2237-000	P10 - 11	WG8-5362-000	P10 - 16		
FS7-2239-000	P35 - 3		P33 - 3		
FS7-2240-000	P30 - 39		P40 - 16		
FS7-2364-000	P35 - 12	WG8-5426-000	P20 - 7		
FS7-2948-000	P32 - 7		P40 - 22		
FS7-2949-000	P35 - 12	XA9-0500-000	P10 - 24		
	P35 - 13	XA9-0591-000	P40 - 25		
	P35 - 14	XA9-0633-000	P01A - 7		
FS7-8348-000	P11 - 15	XA9-0892-000	P20 - 3		
FS7-8349-000	P11 - 17		P30 - 34		
FS7-8351-000	P11 - 15	XA9-0894-000	P30 - 33		
FS7-8352-000	P11 - 15		P40 - 37		
FS7-8353-000	P11 - 15	XB1-2260-409	P21 - 503		
FS7-8354-000	P11 - 17	XB1-2300-406	P30 - 509		
FU3-0483-000	P40 - 9	XB1-2300-409	P30 - 508		
FU3-0486-000	P30 - 11		P32 - 502		
PCB	P B - J1		P42 - 502		
	P B - J2	XB1-2300-607	P30 - 507		
	P B - J3	XB1-2300-609	P10 - 502		
	P B - J5		P21 - 504		
	P B - J6		P32 - 501		
	P B - J7		P33 - 501		
	P B - J9	XB1-2301-006	P35 - 504		
	P B - J10	XB1-2400-609	P10 - 501		
	P B - J201		P20 - 501		
	P B - J301		P40 - 510		
	P B - J401	XB1-2400-806	P10 - 504		
	P B - J501	XB4-7300-609	P11 - 502		

Prepared by  
OFFICE IMAGING PRODUCTS DEVICE QUALITY ASSURANCE CENTER  
CANON INC.  
Printed in Japan

REVISION 0 [ MAR. 1999 ]  
REVISION 1 [ OCT. 2002 ]

5-1, Hakusan 7-chome, Toride-shi, Ibaraki 302-8501, Japan





This publication is  
printed on 100%  
recycled paper.

**Canon**